

A compelling vision for the target railway system

Transport is the backbone of the economy

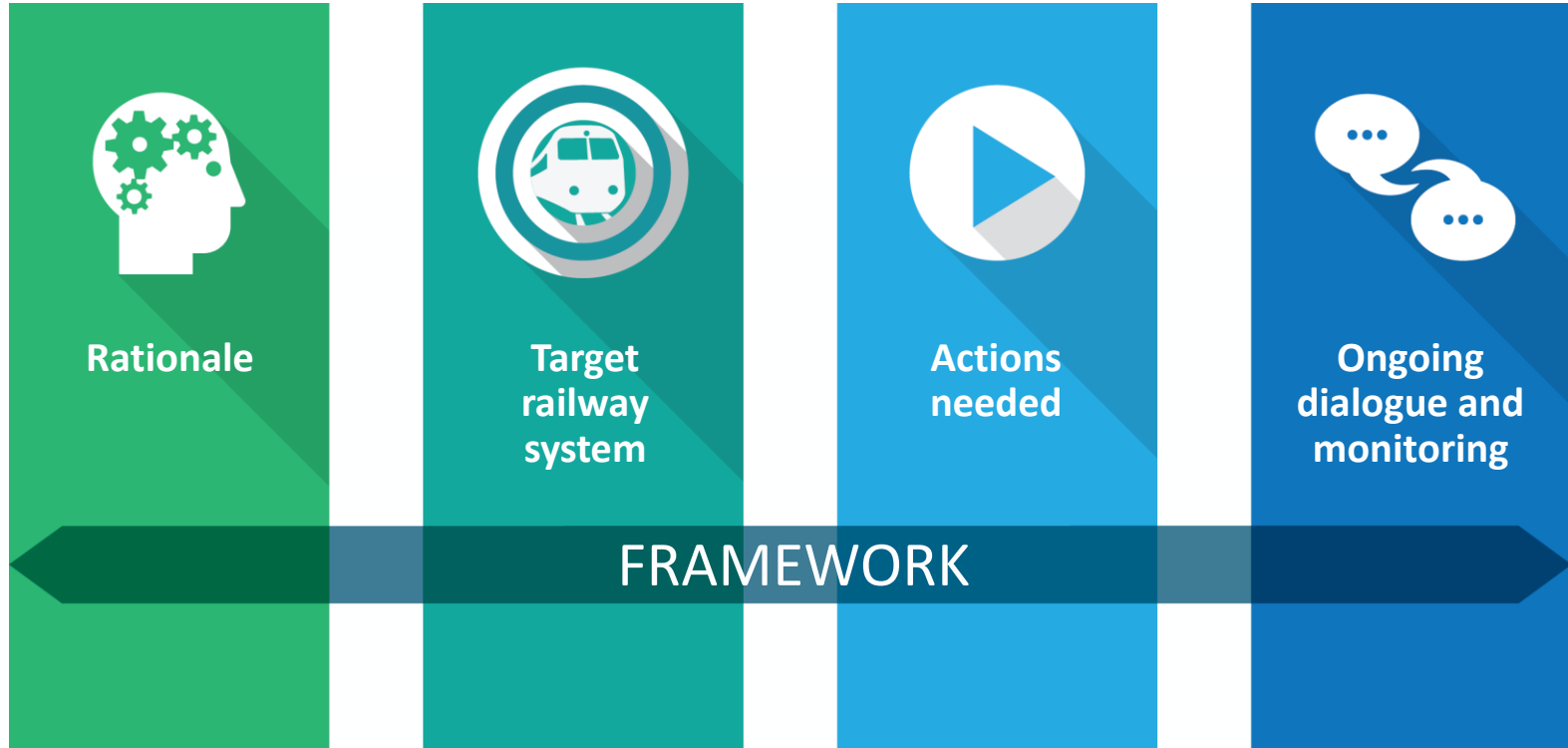


Why is a vision for the target railway system needed?



Photo by [Jéshoofs](#) on [pexels.com](#)

Purpose of the Compelling vision



Rationale for the Compelling vision



**Demand
driven**



**Minimise
railway specific
solutions**



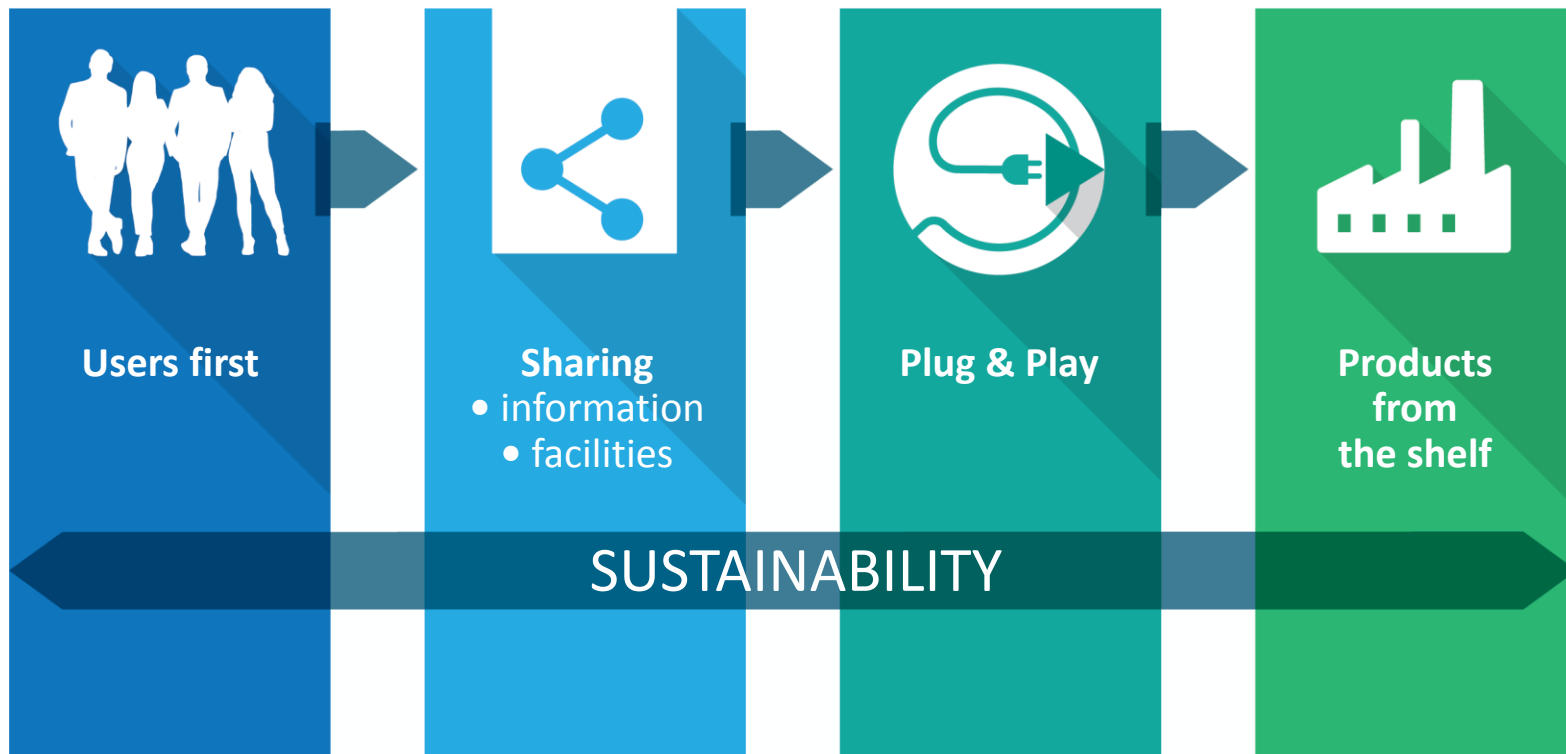
**Better use of
'infrastructure'**



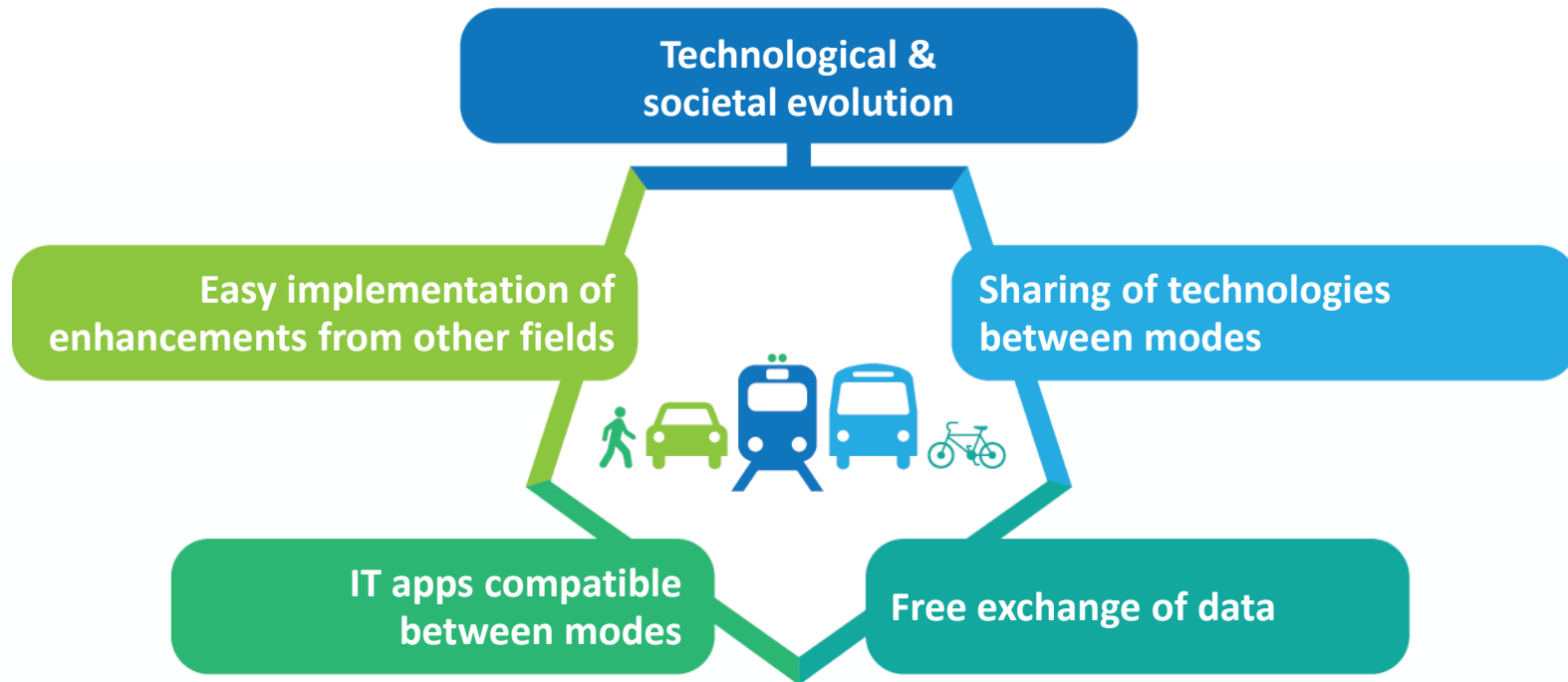
**Measures
to open
the market**

MULTIMODAL APPROACH FOR THE BENEFIT OF END-USERS & CITIZENS

Principles



System thinking, multimodal not silo



Analysis and needed changes



Needed changes to reach the target



Users: freight
& passengers patterns



Financial arrangements
for the SERA
implementation



New regulations for
the future framework



Data management
including telematics



Harmonised operations,
vehicles and infrastructure
within SERA



Cross border traffic
with third countries

Needed changes to reach the target



**Ticketing
and information –
Open market for retailing**



**Personnel skills, competences
and qualifications –
Changing proportion
of categories of staff**



**Trial of new energy
developments from
other industries**



**Traffic management
including CCS**



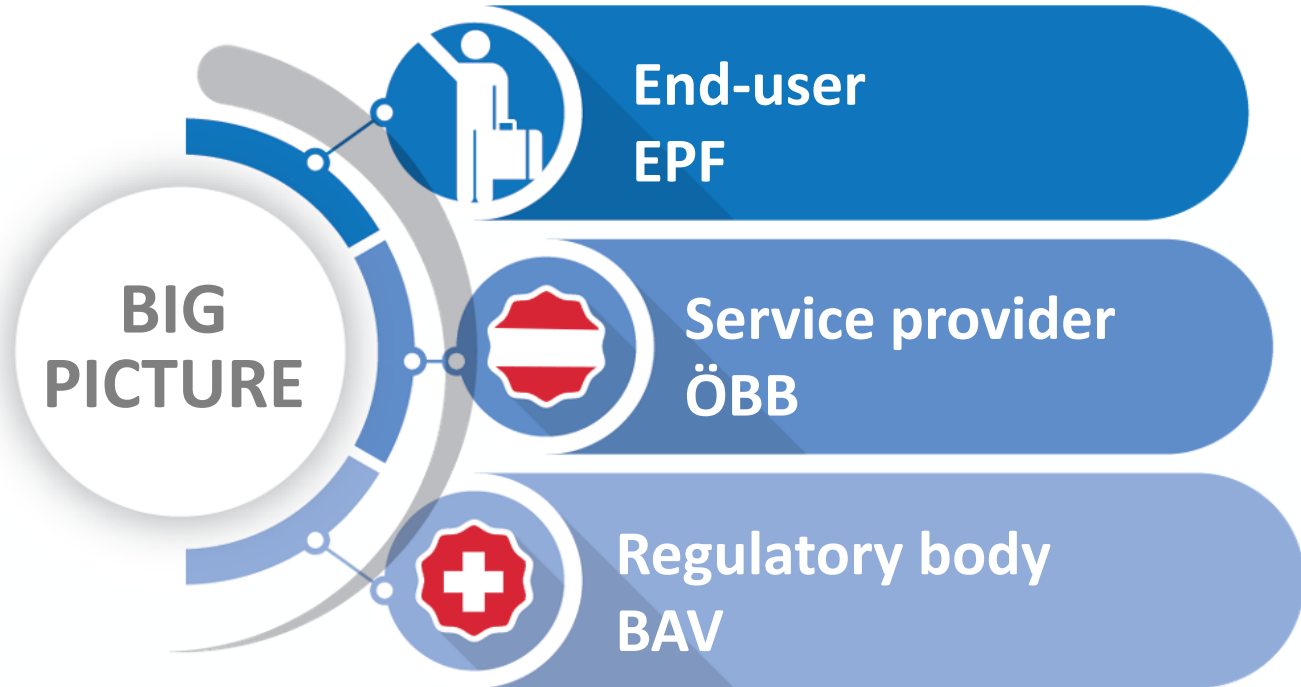
**Interconnected
Infrastructure with
other modes**



**More intelligent and more
accessible vehicles**

CCS: Control Command Signalling

Vision of the Target railway system





Making the railway system work better for society.

Follow us on  **ERA-railways**

Discover our job opportunities on era.europa.eu

