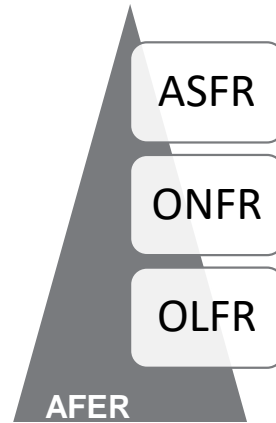




**Implementation of
COMMISSION REGULATION
(EU) No 1305/2014**

**Romanian Railway Safety Authority – ASFR
NCP RO**



AFER is Romanian Railway Authority , the railway and subway specialized technical body of the Romanian Ministry of Transports (www.afer.ro).

Within this body, there are 3 Independent Bodies:

ASFR Romanian Railway Safety Authority

ONFR Romanian Railway Notified Body

OLFR Romanian Railway Licensing Body

AFER supports the 3 Bodies with logistic, IT, economic, legal, human resources and financial facilities.

It covers also other tasks:

-Technical, Informatic Systems, Emergency Situations;

-Scientific Research, Studies, Analysis and drafting National Technical Rules;

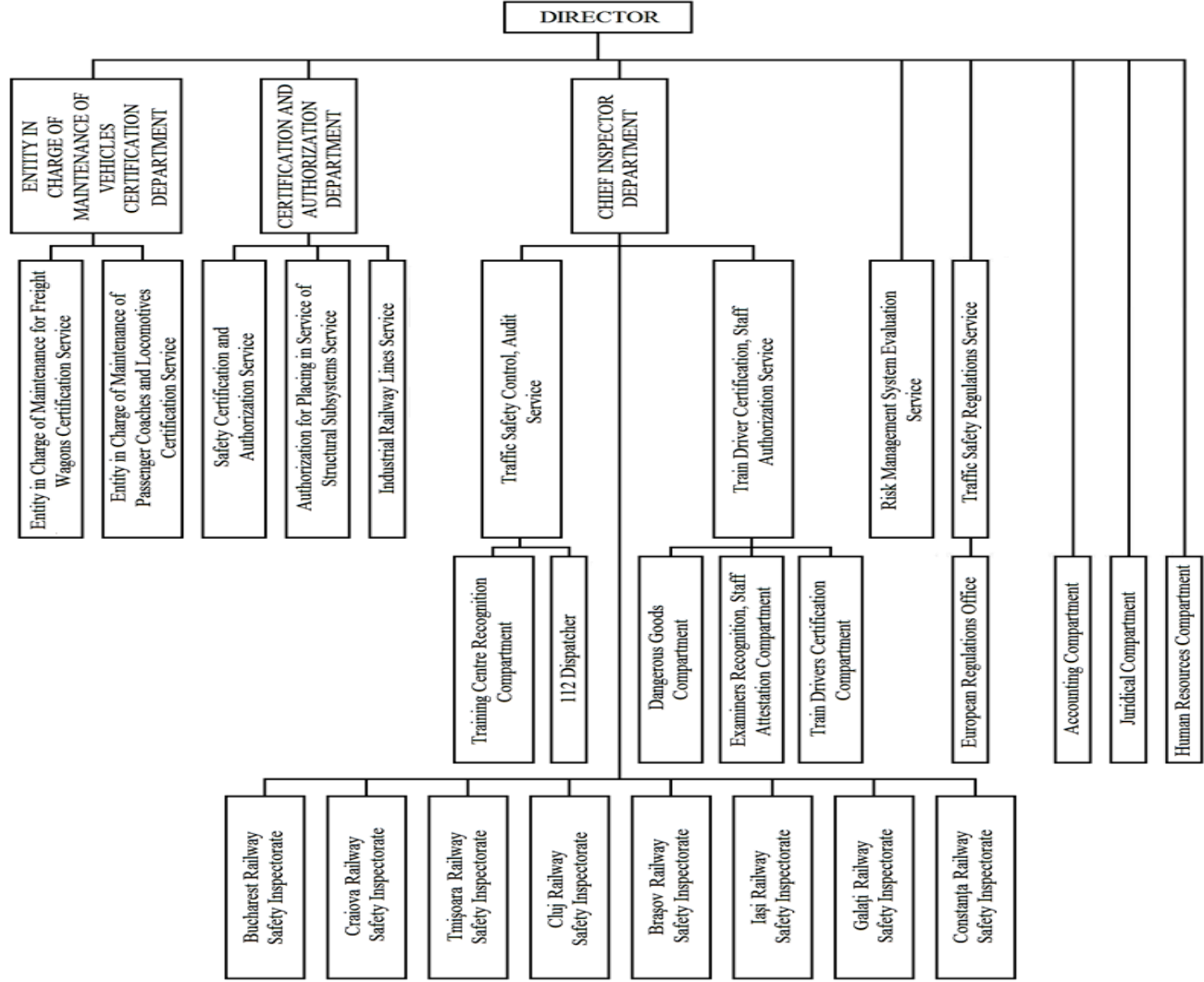
-Transparency and Public Relations;

-Passenger Rights Surveillance;

-Railway Testing Center.

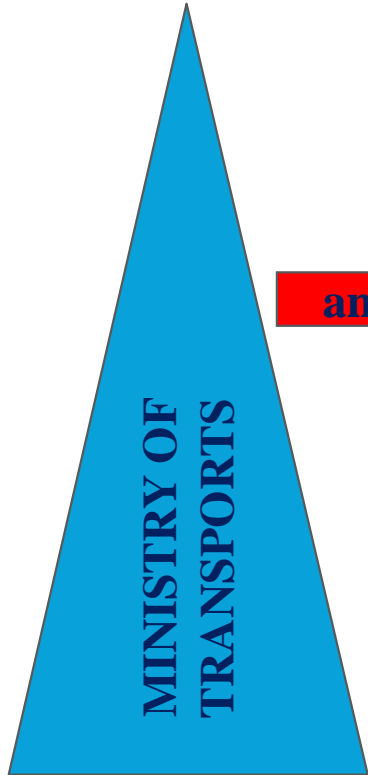


Romanian Railway Safety Authority – ASFR (www.afer.ro/asfr/)





ACTORS INVOLVED



- **NCP RO - ASFR**
- **R U:1 National State Freight Railway Company**
SNTFM „CFR MARFA” SA
24 private railway undertakings
- **I M :1 national infrastructure manager –**
CNCF „CFR” SA
9 IM for rented infrastructure
- **WAGON KEEPERS**
- **ENTITIES IN CHARGE OF MAINTENANCE**
- **RAILWAY IT PROVIDER -INFORMATICA**
FEROVIARA



BIG SIZE RU

- SNTFM “CFR MARFĂ” SA
- GRUP FERROVIAR ROMÂN SA
- DEUTSCHE BAHN CARGO ROMÂNIA SRL
- UNICOM TRANZIT SA



MIDDLE SIZE RU

- CARGO TRANS VAGON SA
- RAIL CARGO CARRIER - ROMANIA SRL
- TRANSFEROVIAR GRUP SA
- VEST TRANS RAIL SRL
- VIA TERRA SPEDITION SRL



SMALL SIZE RU

- CFR – FERSPED SA
- COLAS RAIL Ldt
- CONSTANTIN GRUP SRL
- EXPRESS FORWARDING SRL
- GP RAIL CARGO SA
- INTERNATIONAL RAIL TRANSPORT TIMIȘOARA SRL
- LTE - RAIL ROMÂNIA SRL
- MMV RAIL ROMÂNIA SA
- MIRO CARGO SRL
- RAIL FORCE SRL
- SOFTRANS SRL
- TEF LOGISTICĂ FERROVIARĂ SRL
- TEHNOTRANS FERROVIAR SRL
- TIM RAIL CARGO SRL
- TRANS RAIL SRL
- TRANSBLUE SRL



MAIN ASFR ACTIVITIES

- **Authorization of structural subsystems** and verification of their operating and maintenance;
- **Authorization for placing in service of rolling stock;**
- **Conformity supervision of of interoperability constituents;**
- **Granting, renewing and updating of the safety and ECM certificates;**
- **Recognising railway training centers for train drivers;**
- **Granting and renewing of safety authorizations** for the Romanian railway infrastructure managers;
- **Survey the harmonization of national rules and EU regulations;**
- Performs the safety **supervision** of the railway system;
- **Granting authorizations** for railway staff involved in safety related processes.



MAIN NCP TASKS

- Communicate to the sector the advantages and tasks arising from implementation of the Regulation (EU) nr. 1305/2014;
- Liaison between TAF TSI Implementation Cooperation Group of the Agency and the railway sector (RU, IM, Wagon Keepers, IT Provider, Private Railway Associations);
- Communicate the concerns of the railway sector to the Group;
- Liaise with the Member State Railway Interoperability and Safety Committee (RISC) member;
- Facilitate sharing of informations between Romanian Railway Actors on the market.



BENEFITS

- The companies expect from TAF-TSI an increase of economic efficiency in freight traffic;
- TAF-TSI could be used to control kilometres, wagon maintenance process and to know the location of each wagon in real-time;
- Future use of the electronic transport letter all over EU railway network;
- It is a chance to introduce a common communication standard between the actors in the freight rail transport, fast availability of data, improved data quality;
- System is available also for small users.



CONSTRAINTS

- It already exists a system of programming and following the traffic and wagons;
- TAF-TSI implementation implies some costs;
- Companies Management is not involved enough in the implementation of TAF-TSI;
- Secure the safety of traffic informations against competition on the market might be a problem.



Thank you for your attention !

Unit for Traffic Safety Control, Audit

Luigi SPINU – State inspector

- *Phone: +4 0758 760 201*
- *Fax: 021 307 79 91*
- *e-mail: luigispinu@ofer.ro*