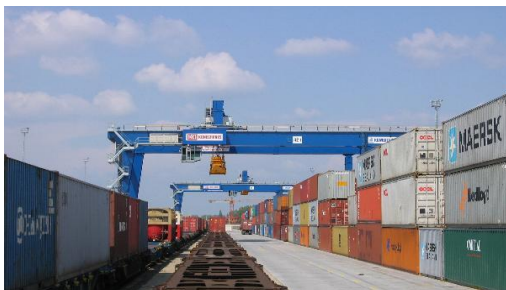


Transport of Dangerous Goods

Multimodal Collaboration on Risk Management



A level playing field for Inland TDG risk management



Multimodal & sustainable framework



Practicable by all **stakeholders**



Compatible with current legislation



Scalable to various **risk situations**



Recognised risk management results



Inland TDG risk management framework

Development phase 2014-2017

DG MOVE
Policy target



ERA
Multimodal technical facilitator
Leading author of the framework

+50 Contributors
from roads, railways and waterways ->
Companies, authorities, regulators, associations...



<- TDG Experts from regulatory committees ->



European LPG Association



Welcome to the workspace of TDG – Roadmap

Add to favourites

Description

The "Roadmap on risk management in the context of inland transport of dangerous goods" (TDG Roadmap) is an initiative launched by the European Union Agency for Railways as a follow-up to the conclusions of an earlier European Commission study.

This initiative is developed in connection with the Joint Meeting of the (COTIF) RID Committee of experts and the (UNECE) Working Party on the Transport of Dangerous Goods, as it is a multimodal development interesting for all Rail, Road and inland Waterways transport of dangerous goods.

In this context, the Agency acts as a facilitator in a multimodal and international environment interesting also for EU railway transport.

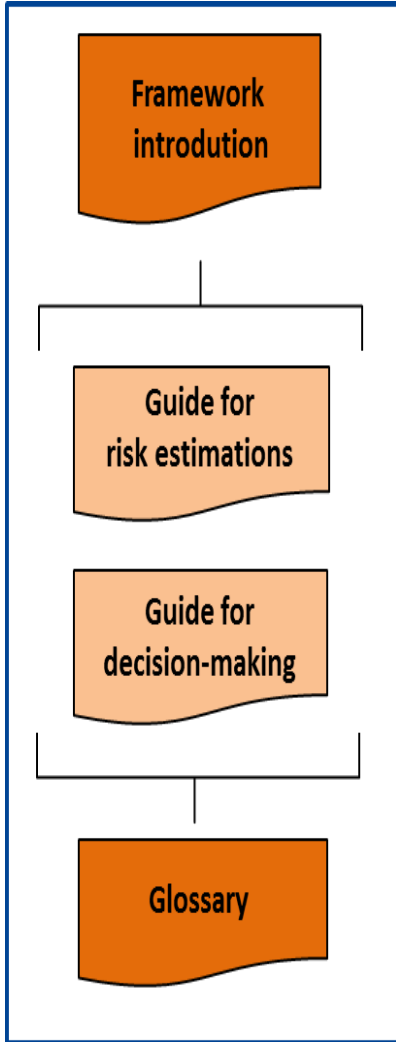
Next events

Start Time	Title
10/07/2018 10:30	1st Dissemination workshop (former 12th Workshop of the Inland TDG Roadmap)
11/07/2018 09:30	2nd meeting of the Expert Users and Development Group (EUDG)
23/10/2018 09:30	2nd Dissemination workshop on Inland TDG risk management (former 13th TDG WS)
27/11/2018 14:00	3rd Expert Users and Development Group

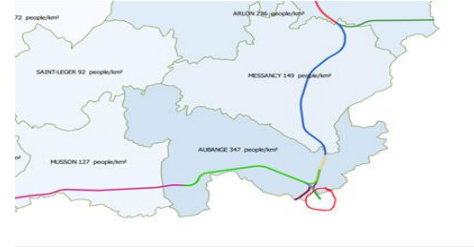
ERA TDG Roadmap extranet
+100 registered members

Minimising risks with a multimodal, practicable and recognised approach Slide 3

- Citizens
 - Confidence in efforts deployed for improving safety
 - Transparency
- Co-modality
 - Optimal use of modes
 - Multimodal assessments
- Safety
 - Common approach to risk estimations
 - Highest practicable safety level (globally)
 - Avoid uncontrolled risk transfers
- Interoperability
 - Remove barriers to international operations
 - Assessment of safety rules
- Companies & regulators
 - Common decision-making framework
 - Robust and recognised decisions



Application scope (examples)



and results (examples)

Consequence	Likelihood				
	Very Likely	Likely	Possible	Unlikely	Highly Unlikely
Fatality	Extreme	High	High	High	Medium
Major Injury	High	High	High	Medium	Medium
Minor Injury	High	Medium	Medium	Medium	Medium
First Aid	Medium	Medium	Medium	Low	Low
Negligible	Medium	Medium	Low	Low	Low

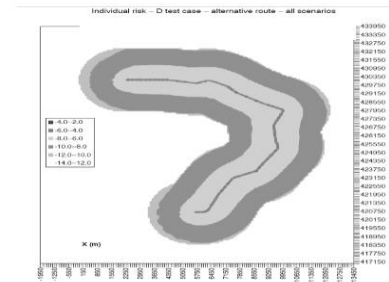


Figure 5: Example of a diagram with ISO risk graphs of the spatial distribution of the individual risk (exponent for 10⁷/annum, from [11])

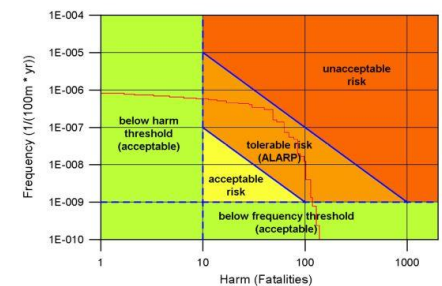
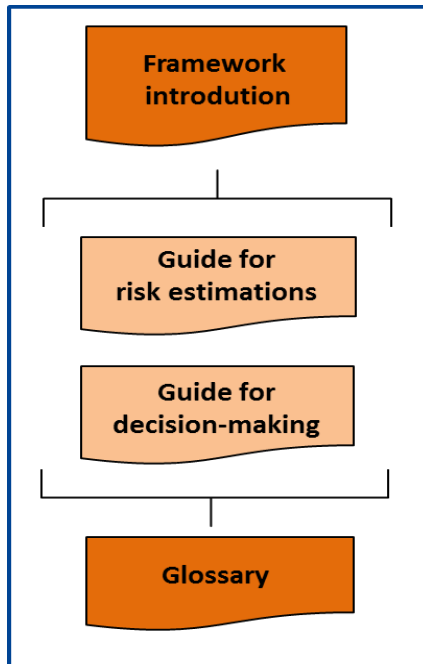


Figure 6: Example of an FN graph for societal risk with possible areas for risk evaluation (presentation of principle with arbitrary scaling)

Publication



Dissemination



Dissemination workshop

- > 1st Dissemination workshop: 10 July 2018 in Luxembourg
- > 2nd Dissemination workshop: 23 October in Madrid



Inland TDG Website

Facilitation

nominate your experts as EUDG members (still open)



Expert Users and Development Group (EUDG)

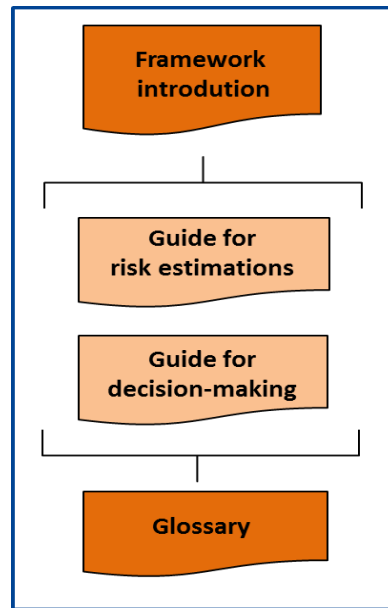
- > 2nd EUDG meeting: 11-12 July 2018 in Luxembourg



Risk estimation engine (specification in 2018)

a harmonised method

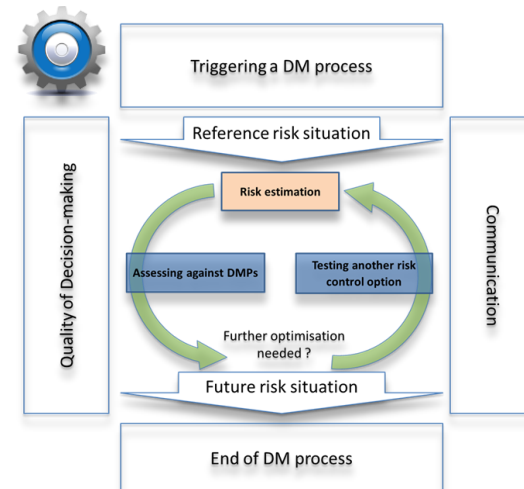
(guides)

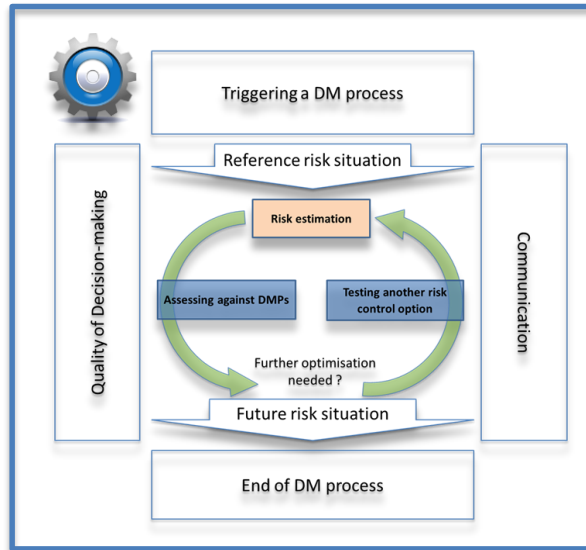
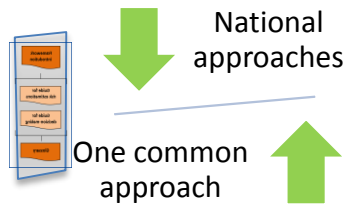


to

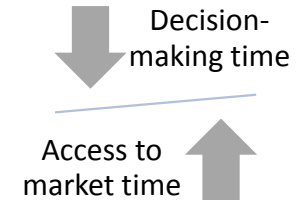
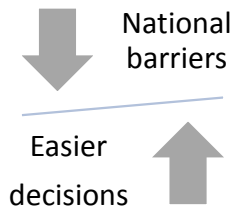
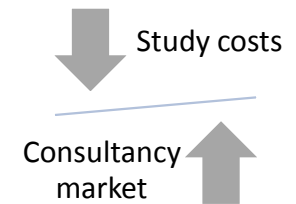
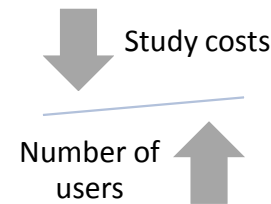
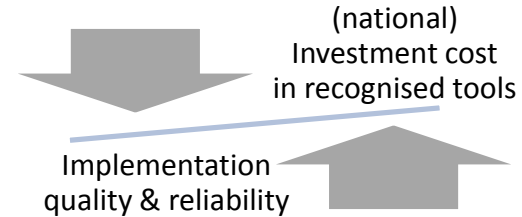
a common risk
management platform

(IT service)





Common Risk Management Platform (RMP)



- RMP impact assessment -> September 2018
- RMP Go/No Go Decision -> Q4 - 2018
- If positive, RMP developments -> start in 2019
- RMP online -> in 2020

Questions ?



Making the railway system work better for society.

Follow us on  [ERA_railways](#)

Discover our job opportunities on era.europa.eu

