

ERA ENISA Conference

Cybersecurity in Railways

Lille 01.12.2022

Frank Weber – Federal Railway Authority (EBA)

Elena Jakobs – Federal Office for Information Security (BSI)

Comparison of responsibilities

Federal Railway Authority

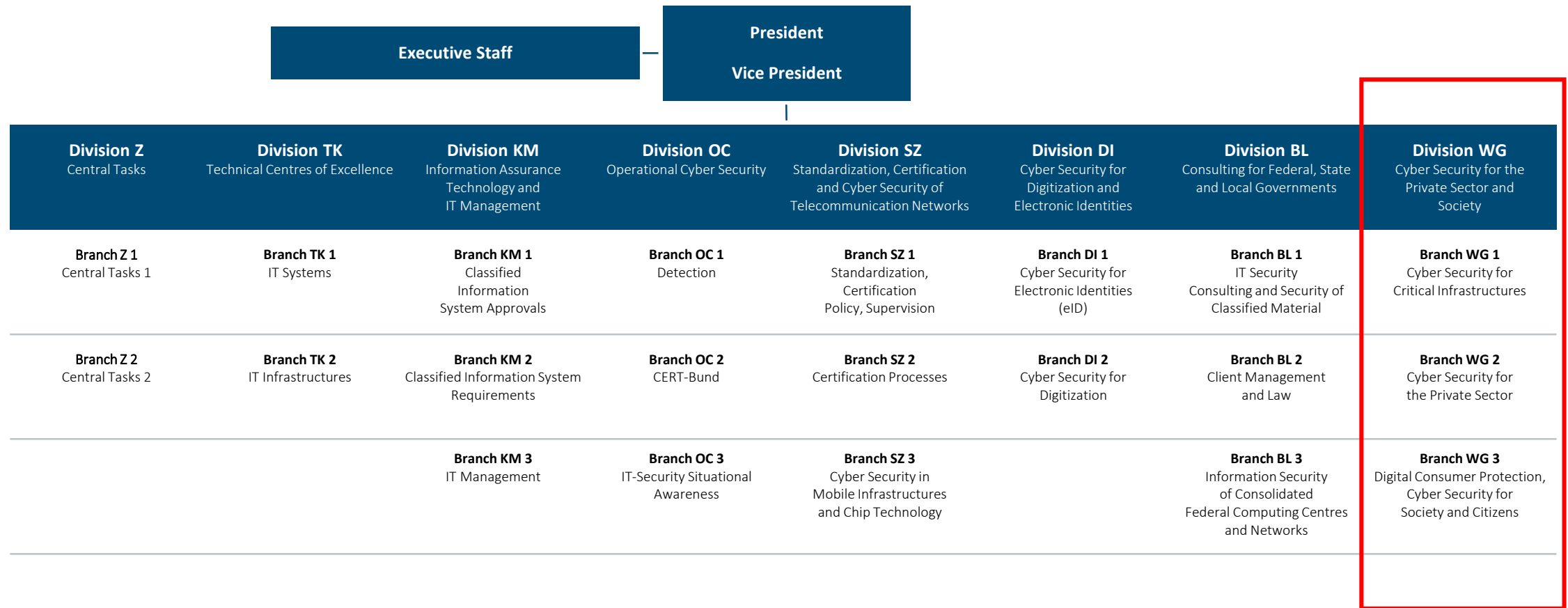
- According to **German General Railway Act (AEG)** and related laws
- Supervisory, licensing and safety authority for **railways and railway undertakings**
- “... avert danger resulting from railway operation or being emanated by operational facilities ...”
→ **Safety (also involving IT Security)**

Federal Office for Information Security

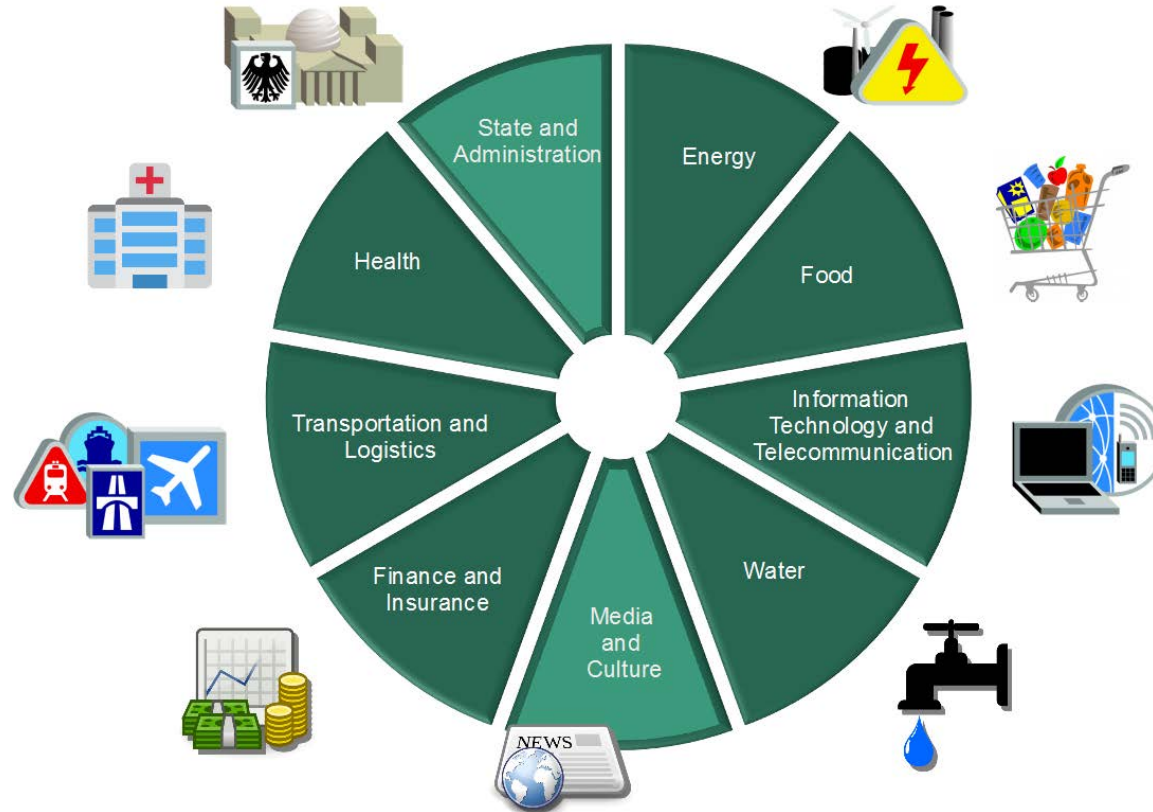
- According to **German IT-Security Act (IT SiG) and BSI Act (BSIG)**
- Shapes **information security** in digitalization through prevention, detection and response for government, business and society.
- **IT Security** - Cyber Security for Railway Infrastructure

The BSI as an organisation

As of: 15 December 2021



Critical Infrastructure Sectors



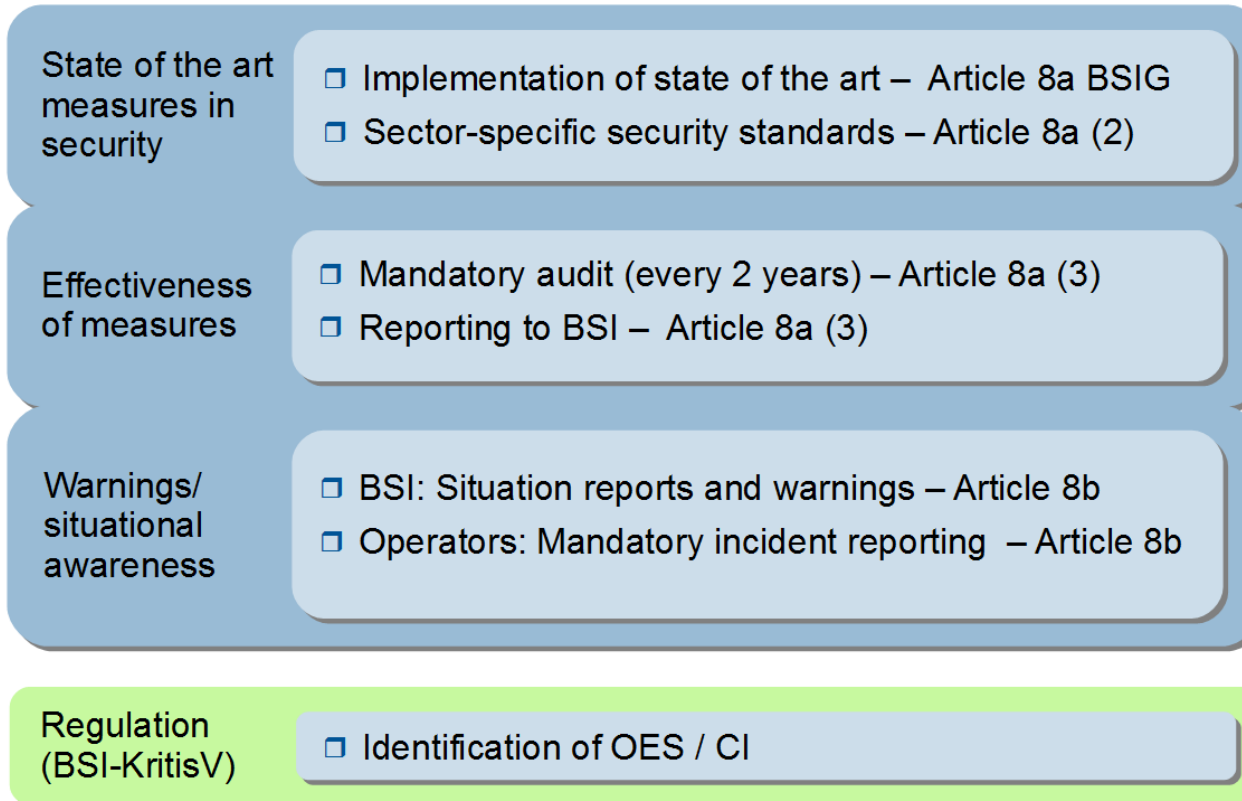
What aspects of Railway Transport are Critical Infrastructure?

Sector	Transport & Traffic	
Service	Passenger & Freight Transport	
Section	Railway Transport	
System category	Criteria	Threshold
Passenger station	Categorization of stations	Highest category
Freight station	Number of outgoing trains per year	23.000
Rail yard	Number of trains formed per year	23.000
Railway network and Interlocking system	Rail network according to TEN-V	Core Network

What aspects of Railway Transport are Critical Infrastructure?

Sector	Transport & Traffic	
Service	Passenger & Freight Transport	
Section	Railway Transport	
System category	Criteria	Threshold
Traffic management and Control system	Control system of the rail network according to TEN-V	Core Network
Railway control centre	Scheduled transport performance (passenger transport) in train kilometers per network/subnetwork	8.200.000
	Scheduled transport performance (freight transport) in tonnes/kilometers per network/subnetwork	730.000.000

Overview of new legal obligations according to BSI Act



Where IT Security joins Railway Safety

- **ETCS (European Train Control System)**
- **ATO (Automatic Train Operation)**
- **FRMCS (Future Railway Mobile Communication System)**
- **Infrastructure Digitisation (involving IP transport of traffic control data)**
- **That's it? ...**

Some Questions

- **Is IT Security only relevant for „Critical Infrastructure“ parts of railways?**
- **Does the increased application of IT/OT introduce new safety-related aspects?**
- **Can a ransomware attack at rolling stock manufacturer be safety-relevant?**
- ...

EBA perspective on railway IT / Cyber security

- **EBA gathers information from railway infrastructure and traffic operations**
 - Regulatory reporting
 - Requests For Information / Supervisory tasks
- **In 2018 EBA established railway IT / Cyber Security Task Force**
 - Authorisation of IT-based railway systems and components
 - Railway operator permission approval / renewal
 - Licensing of IT security assessors
 - Legal and standardisation work
 - IT security incident and vulnerability monitoring (e.g. based on BSI information)
 - ...

Again – as a summary: Comparison of responsibilities

Federal Railway Authority

- According to **German General Railway Act (AEG)** and related laws
- Supervisory, licensing and safety authority for **railways and railway undertakings**
- “... avert danger resulting from railway operation or being emanated by operational facilities ...”
→ **Safety (also involving IT Security)**

Federal Office for Information Security

- According to **German IT-Security Act (IT SiG) and BSI Act (BSIG)**
- Shapes **information security** in digitalization through prevention, detection and response for government, business and society.
- **IT Security** - Cyber Security for Railway Infrastructure

Thank you for your attention!

Contact

Frank Weber

weberf@eba.bund.de
Tel. +49 (0) 69 23855 1227

Federal Railway Authority (EBA)
Heinemannstr. 6
53175 Bonn
www.eba.bund.de

Elena Jakobs

elena.jakobs@bsi.bund.de
Tel. +49 (0) 228 9582 5710

Federal Office for Information Security (BSI)
Godesberger Allee 185-189
53175 Bonn
www.bsi.bund.de