



**INFRABEL**

**ERA**

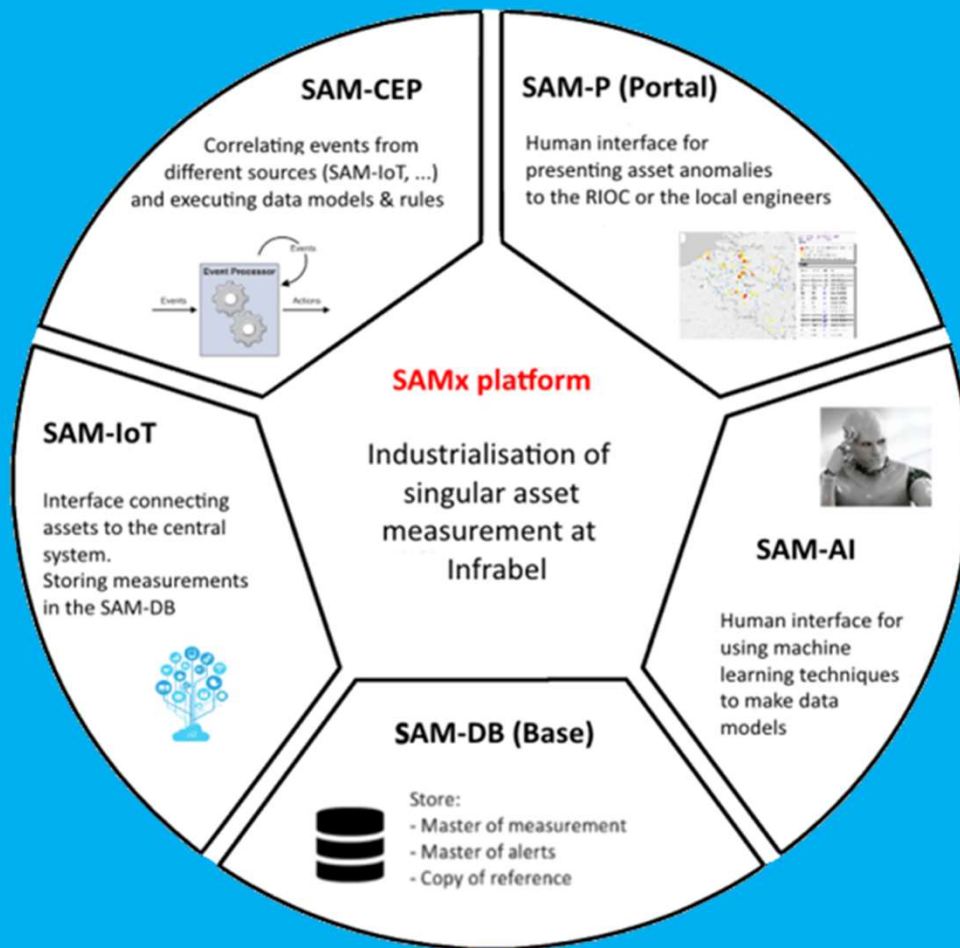
## **ERTMS Congress**

*Signalling Asset Monitoring – SAM Platform*

Pieter Verlinden

**25/04/2024**



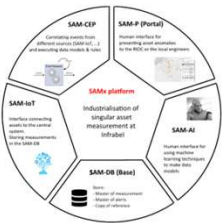


# SAM Platform

Signalling Asset Monitoring

## J.A.R.V.I.S

(not) Just Another Railway Visual Inspection System



# SAM Platform

## Signalling Asset Monitoring

### Welcome to the SAM portal

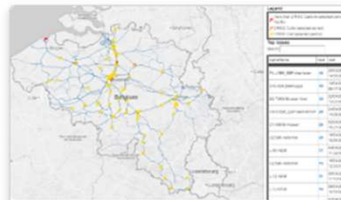
On this site you find some useful portals for the anomalie follow-up of Singular Asset Management



**AW Portal**  
Portal for turnouts (switches) based on EBP, RIAM and PQube data



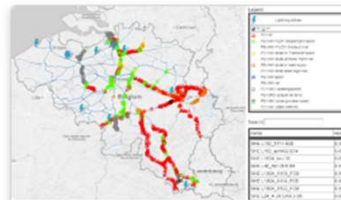
**LX Portal**  
Portal for level crossings based on EBP, RIAM and RTF data



**TPTC Portal**  
Portal for train protection & control (ETCS, TBL1+, LEU, balise, ...)



**TVP Portal**  
Portal for track vacancy proving (ACAT, TC (Jade, ...)) monitoring & inventory



**Shelter Portal**  
Portal for signalling shelters (temperature, grounding)



**Power Distribution**  
Power Distribution & Substations. Shelter & weatherstations visualisation



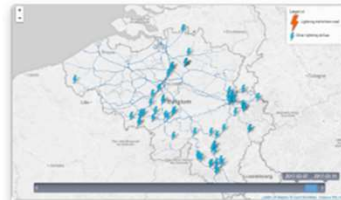
**e1002 Viewer**  
Visualisation of electronic 1002 plans. Zoom on geographical zone to see the plan.



**Train Viewer**  
Geographical visualisation of ebp trains. !!!Some ebp to inventory mappings are faulty.

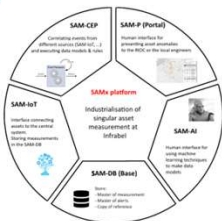


**EBP Inventory**  
Geographical visualisation of ebp elements. !!!Some ebp to inventory mappings are faulty.



**Lightning strikes**  
Visualisation of the lightning strike locations in a given period





# SAM Platform

## Signalling Asset Monitoring

INFRABEL



Commercial trains

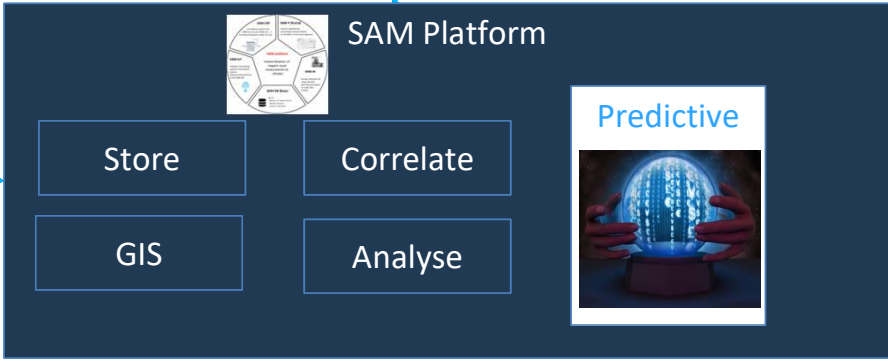
Train Control  
Computer  
Interlocking

Measurement  
Data

Computer  
logs



IoT



Welcome to the SAM portal  
On this site you find some useful portals for the accurate follow-up of Singular Asset Management

AW Portal: Portal for turnouts/buffers based on ESP, Raster and PQcode data

LX Portal: Portal for level crossings based on ESP, Raster and RFF data

TPTC Portal: Portal for train protection & control (TPTC, TBLN, LEU, balise, ...)

Engineer



MASTER DATA

Condition-  
& Usage based

Reactive



Technician

Intervention

Malfunction

Operations Cent



Planner

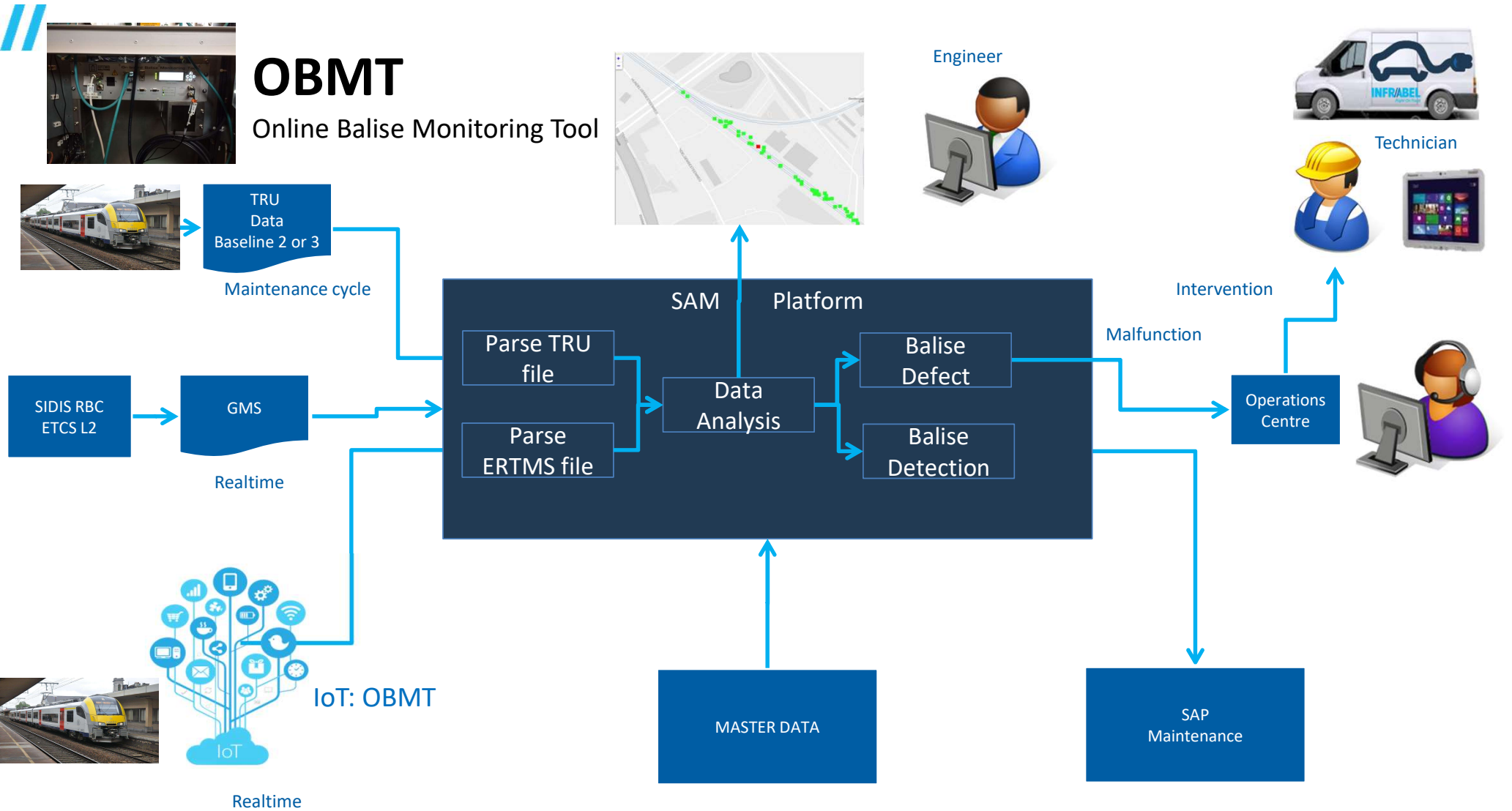
SAP  
Maintenance

Time-based



# OBMT

Online Balise Monitoring Tool



# TRU / JRU

Juridical Recording Unit

# During maintenance cycle / Periodical

	Infrabel work train		Alstom Break MS80 – b3
	Siemens Desiro ML MS08 – b2		Alstom MS96 – b3
	Alstom Autorail 41 AR41 – b3		Siemens EuroSprinter HLE18/19



# OBMT

Online Balise Monitoring Tool

**Control cabinet (Siemens Mobility Desiro)**

EVC (European Vital Computer) ←

JRU (Juridical Recording Unit) ←

MVB bus ←

OBMT (On-board balise monitoring tool) ←





# OBMT

Online Balise Monitoring Tool



GPS antenne

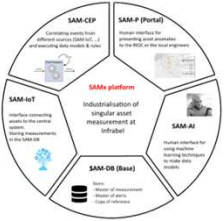
GSM antenne

MVB bus

Supplier  
ERTMS Solutions





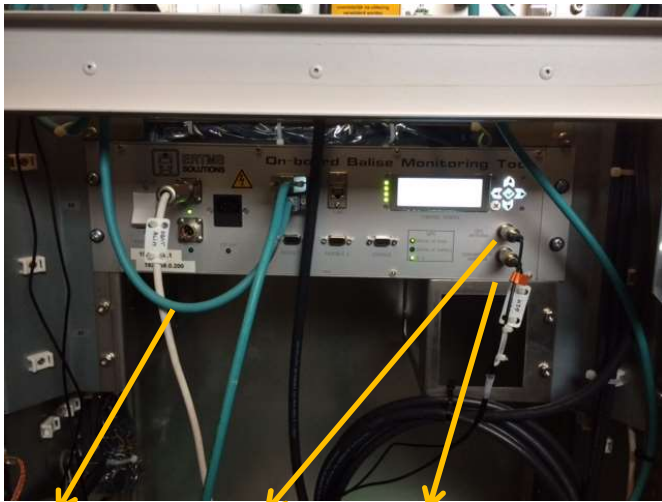


# SAM Platform

Signalling Asset Monitoring

IoT on commercial trains. Real time verification of ETCS equipment

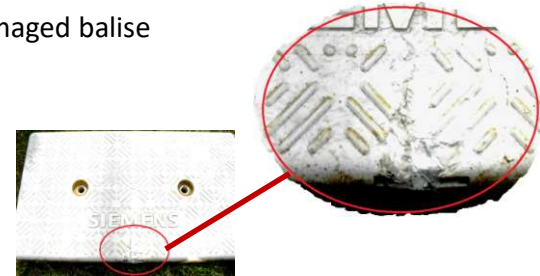
Connection problem



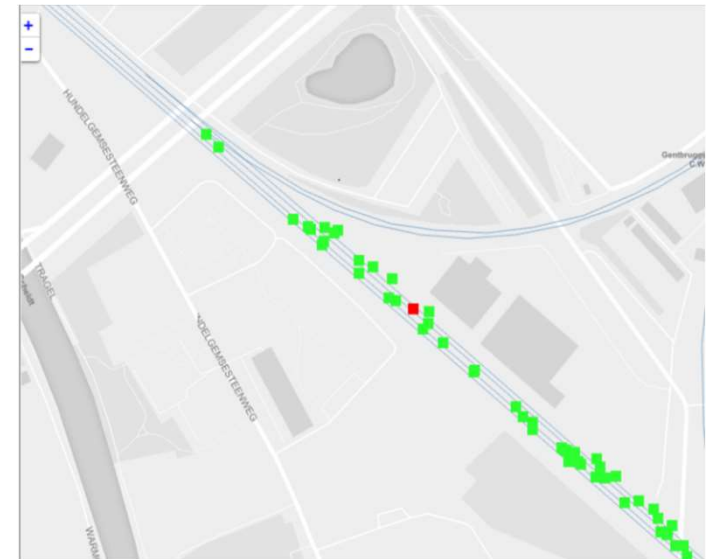
MVB bus      GPS antenna      GSM antenna



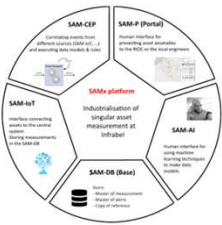
Damaged balise



- 5 commercial vehicles
- + offline data other trains
- 30000/33000 balises inspected
- saves 15 FTE / year



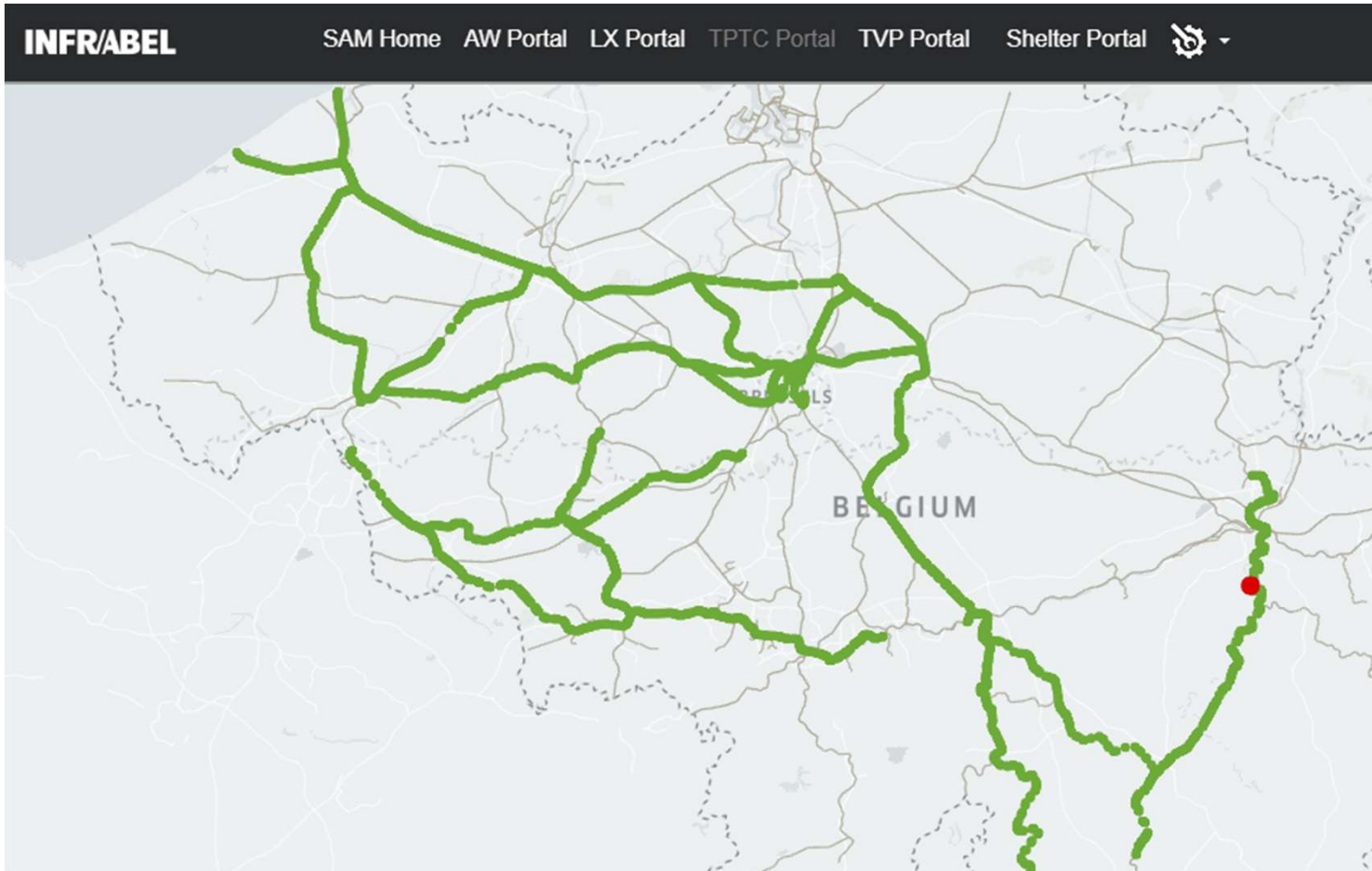
Real-time data to diagnostics system and processing by Operation Center

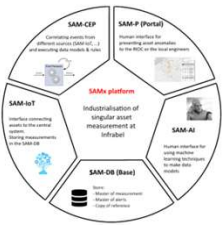


# SAM Platform

Signalling Asset Monitoring

## Insight map





# SAM Platform

## Signalling Asset Monitoring

Insight map: clickable objects

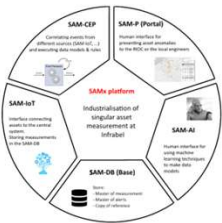
**INFRABEL** SAM Home AW Portal LX Portal TPTC Portal TVP Portal Shelter Portal

**Bad Detection**

balise	253 8415 1
s_date	2024-04-12 09:37:05
vehicle	OBMT-004.SPYBOX
message	2001,2302
speedatcrossing	79.463767
http_link	<a href="http://tst-amdc/geo/tptc_beacon_check.html?nid_c=253&amp;nid_bg=8415">http://tst-amdc/geo/tptc_beacon_check.html?nid_c=253&amp;nid_bg=8415</a>

# Detected issues

Code	Message	Description
2001	Balise OK	
2101	Balise P254	LEU issue or connection between LEU and Eurobalise interrupted
2301	Balise Missed	Balise in group missing, removed or covered
2302	Balise has M_COUNT = 254	LEU issue or connection between LEU and Eurobalise interrupted
2103	Balise group with balises with differen M_COUNT	Signal state change when euroantenna of train was in between balises of a group



# SAM Platform

## Signalling Asset Monitoring

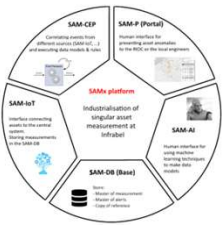
# Balise history, all train detections

Click for help on message codes

CSV Excel

Search:

eventdate Brussels	measuredby	n_pig	level_mode	speed	m_mcount	omschrijving	source	message
12/04/2024 09:37:05	OBMT-004.SPYBOX	1		79		2001,2302;50.516292,5.564342	ERTMS	<a href="#">eurobalise connection problem or LEU problem</a>
12/04/2024 09:37:05	OBMT-004.SPYBOX	0		78		2001,2101;50.516292,5.564342	ERTMS	<a href="#">eurobalise connection problem or LEU problem</a>



# SAM Platform

## Signalling Asset Monitoring

# Expert system: problem analysis

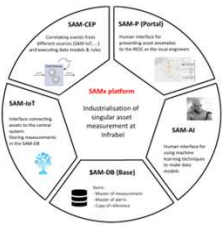
Kies een karakteristiek

Bewaren

- select an option --
- select an option --
- Lijn/zone uitgerust in
- Eurobalise observering
- Trein in modus
- LEU observering
- EBP scherm observering
- RBC observering
- LRMS observering
- GMS observering
- Trein observering
- Verdeeldoos meting (igv LEU S21)
- LDI observering

NL | FR

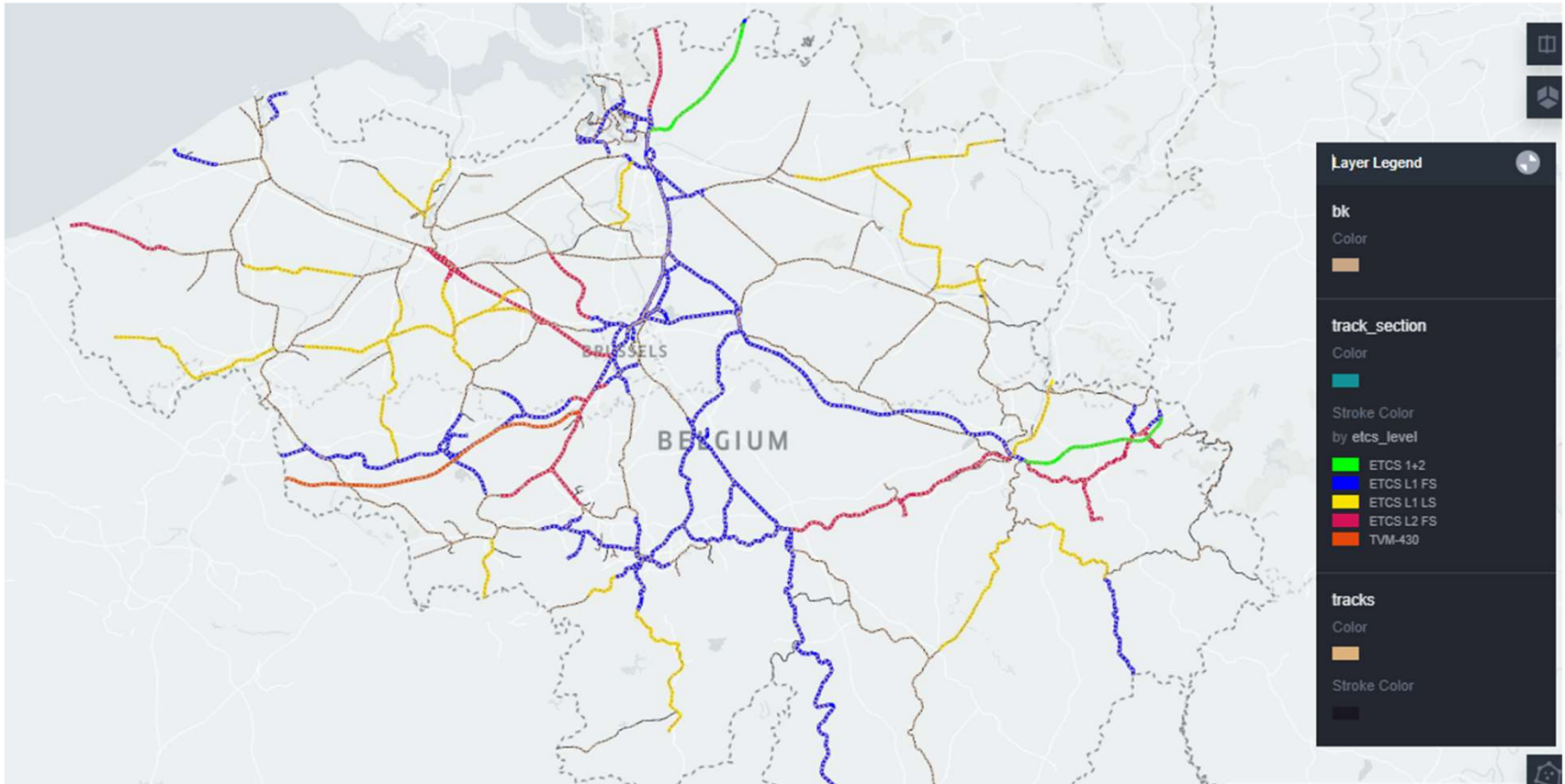
karakteristiek	waarde	
EBP scherm observering	Fout zichtbaar op EBP beeld	
Eurobalise observering	pakket 254 aanwezig	
LRMS observering	Niet gekend	
mogelijke oorzaak		
LEU in storing		
LEU uitgeschakeld		
LEU<=>SB onderbroken		
karakteristiek	suggestie	value
Eurobalise observering	Welk telegram werd uitgelezen?	1.5000000000000000
LEU observering	Staat de LEU aan?	1.5000000000000000
Verdeeldoos meting (igv LEU S21)	Is er een meting verdeeldoos (igv LEU S21)?	1.5000000000000000

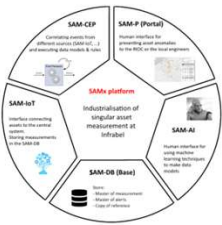


# SAM Platform

Signalling Asset Monitoring

## Insight map: ETCS

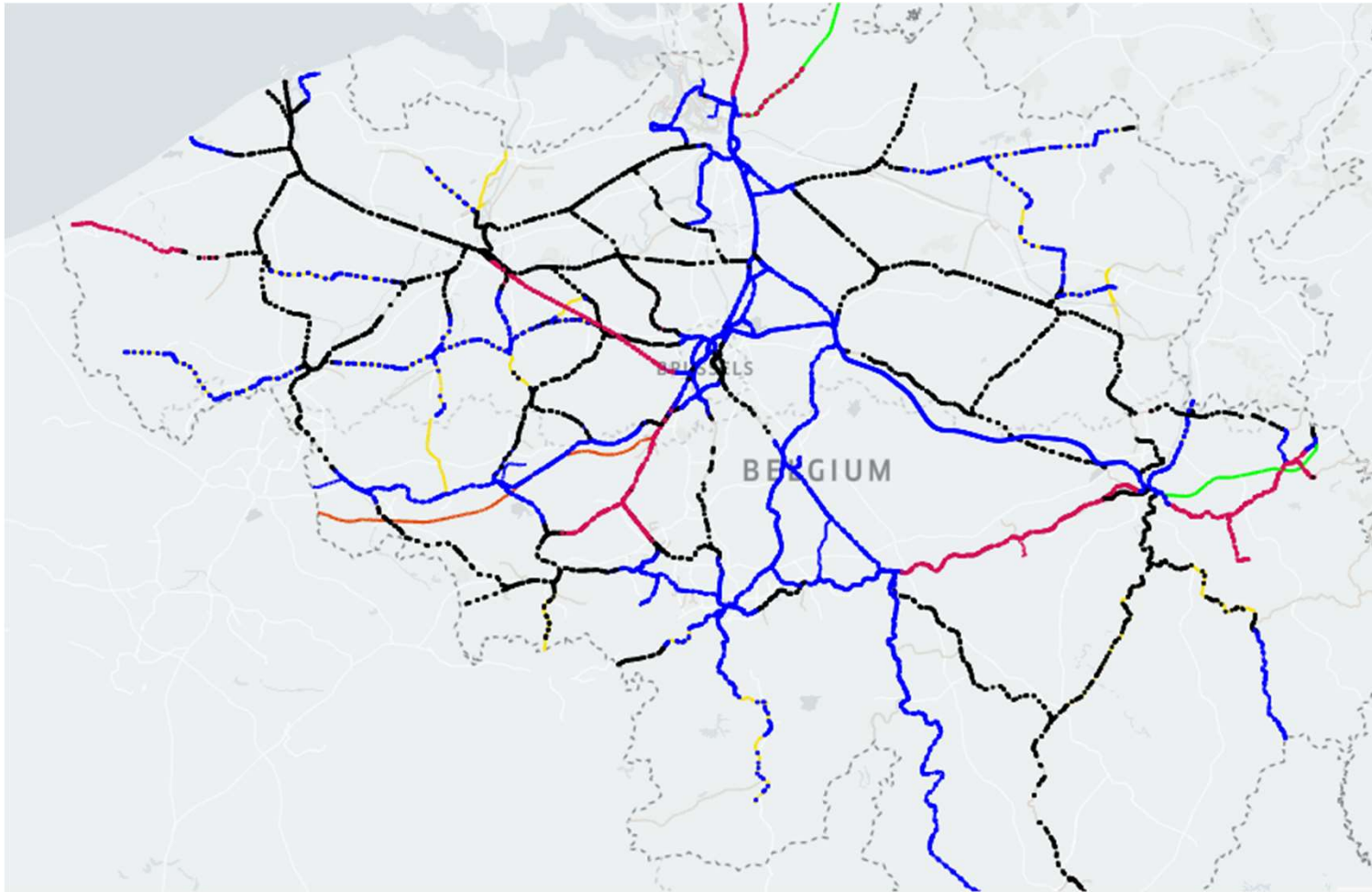




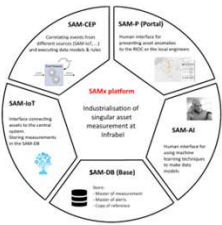
# SAM Platform

Signalling Asset Monitoring

Insight map: applied protection per balise



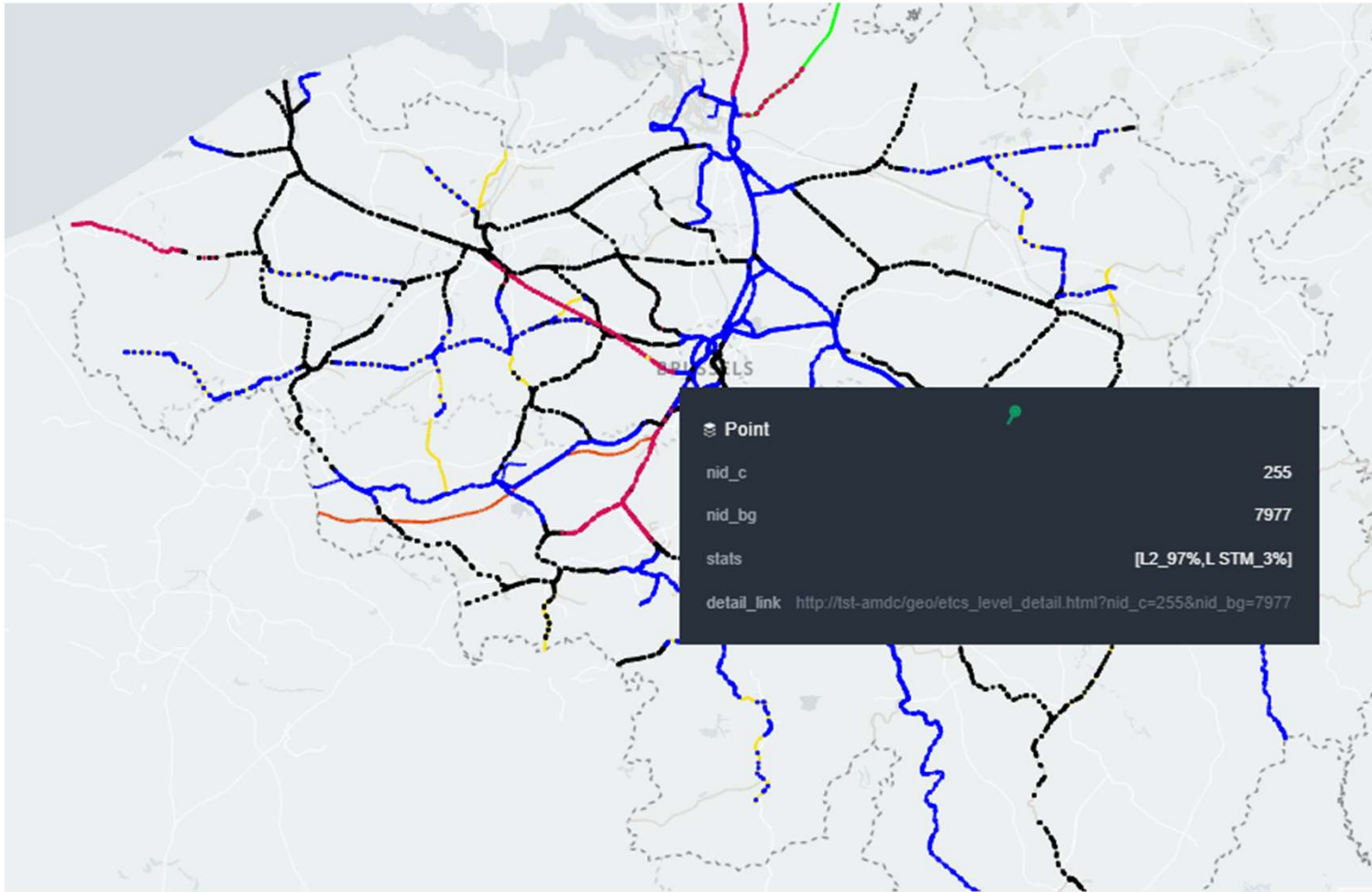


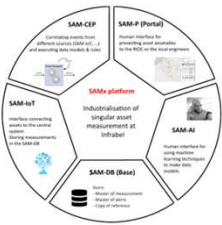


# SAM Platform

## Signalling Asset Monitoring

Insight map: clickable objects





# SAM Platform

Signalling Asset Monitoring

## Detail of applied protections

**INFRABEL**      SAM Home   AW Portal   LX Portal   TPTC Portal   TVP Portal   Shelter Portal

CSV   Excel

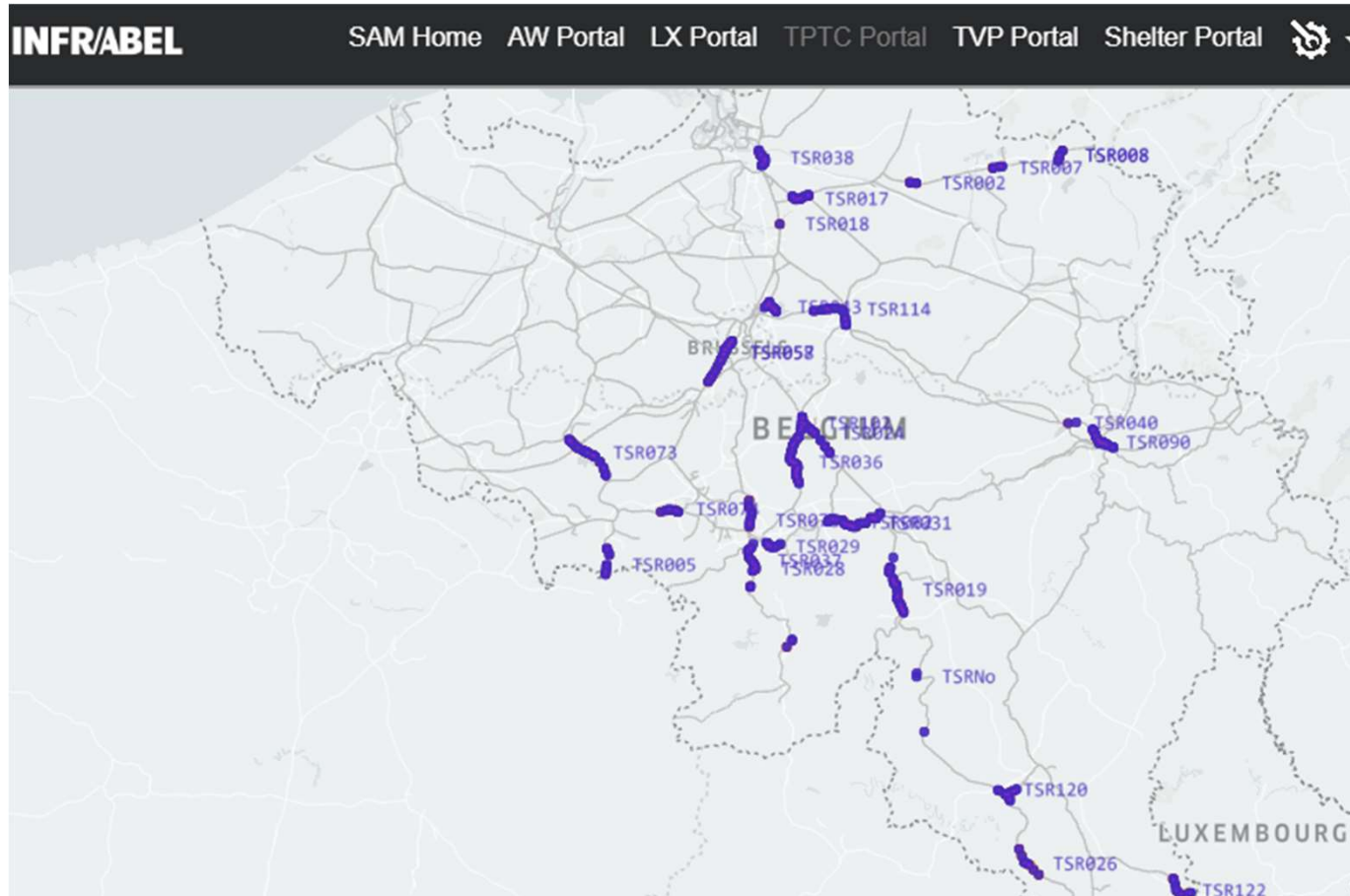
Search

vehicle_type	m_level	pctg	abs_number
<input type="text" value="Search vehicle_type"/>	<input type="text" value="Search m_level"/>	<input type="text" value="Search pctg"/>	<input type="text" value="Search abs_number"/>
AM08	L STM	100	48
AM80	L2	100	578
HLE18_HLE19	L2	100	1030
MS96	L2	100	86

# TSR

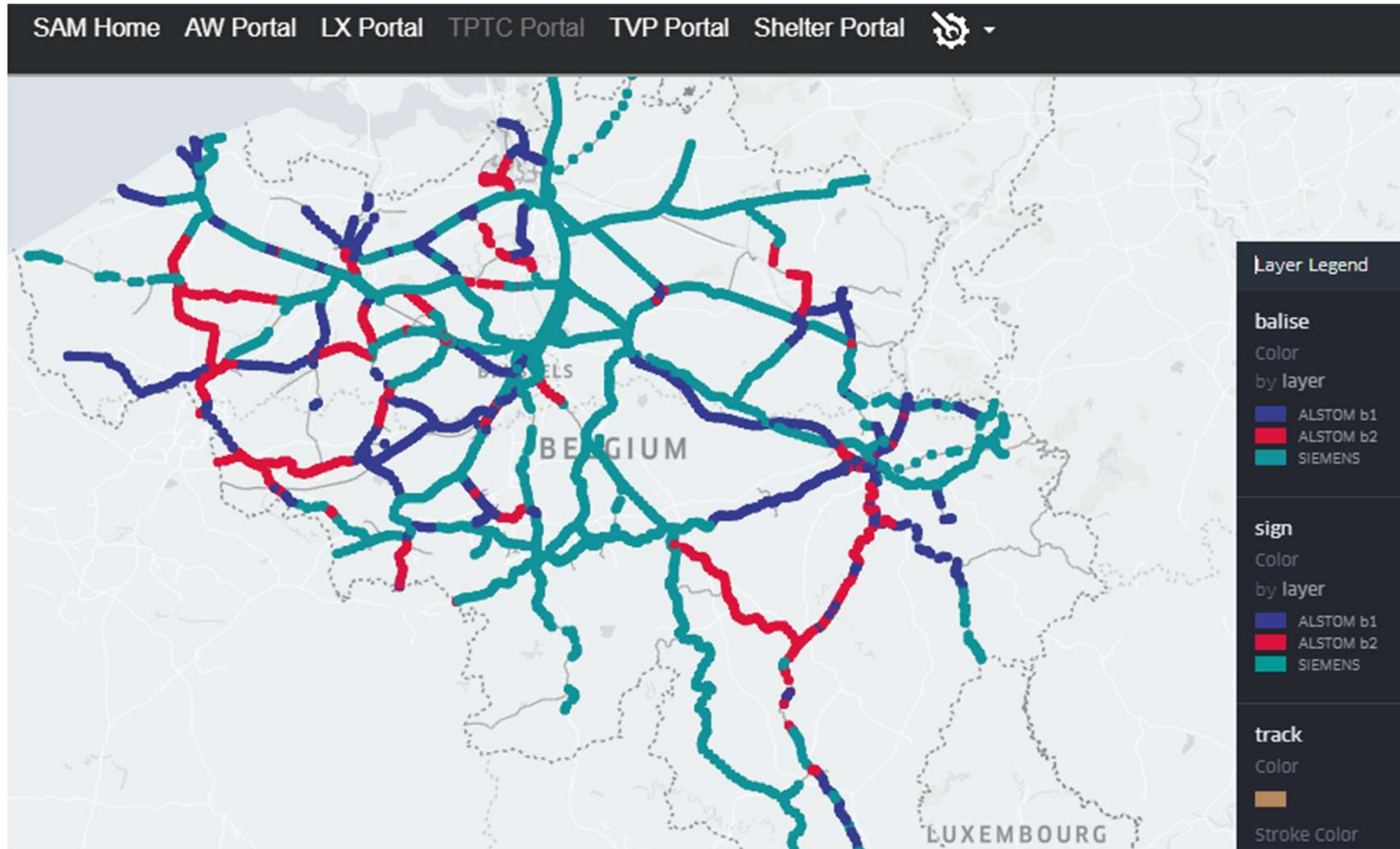
Temporary Speed Restrictions

## Insight map: Applied speed restrictions



# Suppliers

## Insight map: Technologies





GSALightTop 99%

GSA 99%

GSALightBot 98%

GSAPanel 99%

GSALightSmall 94%

TPhone 99%



CatSteadyArm 54%

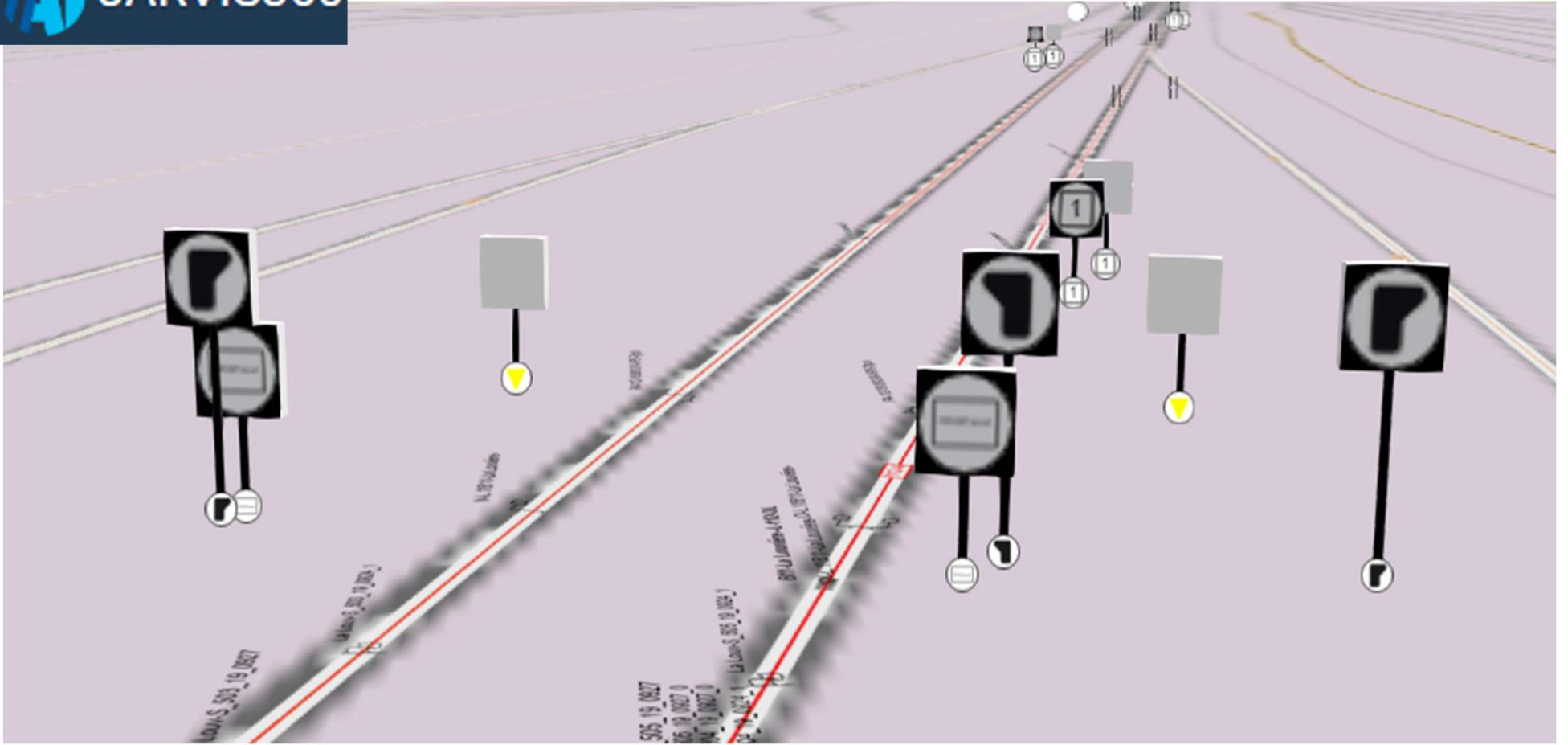
CatSteadyArm 41%

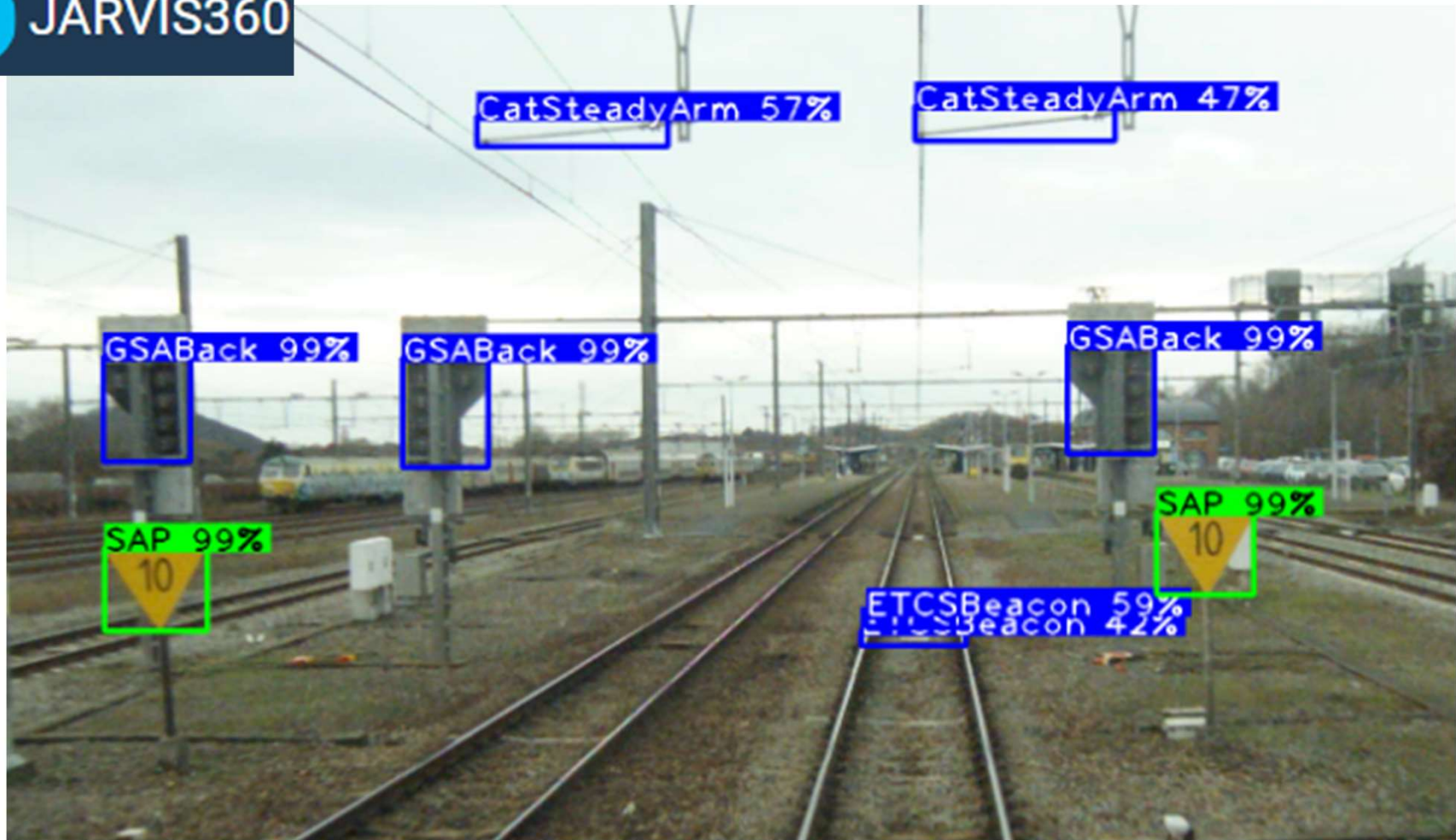
HmPanel 63%

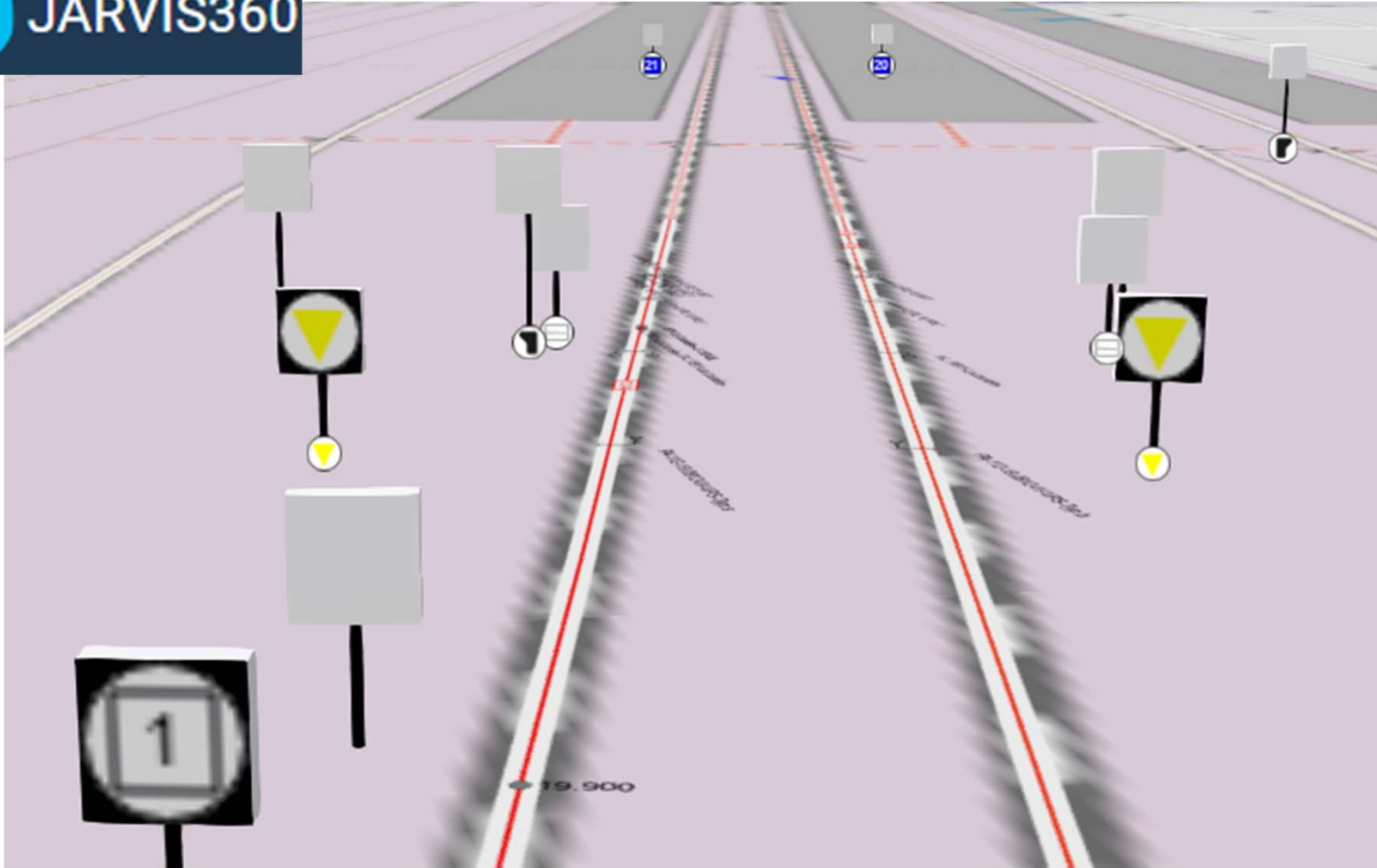
GSALight

GSA 99%













**Q&A**