

Moving Europe towards a sustainable and safe railway system without frontiers.

Stefano Cornachin  
 Key Account Manager  
 Adriafer SRL  
 Riva Tommaso Gulli 12 c/o Regus  
 34123 Trieste  
 Italy

Valenciennes, 4/7/2024

#### IRAIL Project Compliance Test – CEF Grant Agreement INEA/CEF/TRAN/M2018/ 1777054

Dear Stefano Cornachin,

I confirm and certify herewith that the following TAF TSI functionalities implemented by the company Adriafer SRL (Italy), within the project “CEF Grant Agreement INEA/CEF/TRAN/M2018/ 1777054”, are compliant with the appropriate provisions of the [TAF-TSI Regulation \(EU\) 2021/541](#) and its [Technical Documents](#) (XSD version 2.5.0 and 3.4.0) as follows:

TAF function / milestone tested	TAF TSI chapter	Type Compliance	Activity Number
M04 - Consignment note	4.2.1. Consignment Note data	Hard	Activity 1
M05 - WIMO	4.2.10.2. Wagon and Intermodal unit Operational Database	Soft	Activity 1
M06 - InterChange reporting	4.2.6. Shipment ETA	Hard	Activity 1
M07 - Wagon reporting	4.2.7. Wagon Movement	Hard	Activity 1
M08 - Path Request	4.2.2.2. Path Request message	Hard	Activity 1
M09 - Train composition	4.2.3.2. Train Composition message	Hard	Activity 1
M10 - Train Ready	4.2.3.3. Train ready message	Hard	Activity 1
M11 - Train Running Forecast	4.2.4.2. Train running forecast message	Hard	Activity 1
M12 - Train Running Interrupted	4.2.5.2. Train running interrupted	Hard	Activity 1
M13 - Reference files	4.2.10.1. Reference files	Hard	Activity 1

M14 - Common Interface	4.2.11.1. General Architecture and 4.2.11.5. Common Interface	Hard	Activity 1
M15 - Unique Train ID	4.2.1. Object Identifiers of the ERA recommendation 006REC1128 V2.0 from 27/01/2022	Hard	Activity 1
M16 - RSRD	4.2.9.2. The Rolling Stock Reference Databases	Hard	Activity 1
M19 - Train composition	4.2.3.2. Train Composition message	Hard	Activity 2

Above *soft* compliance is based on the fact that above message carries all mandatory elements from the TAF TSI XSD (see chapter 6.2.1 of the TAF TSI).

To enable the ERA verification, Adriafer SRL has sent on 06.03.2024 to ERA TAF TSI compliant

- Consignment note
- WIMO
- Inter Change reporting
- Wagon reporting
- Path Request
- Train composition
- Train Ready
- Train Running Forecast
- Train Running Interrupted
- Reference files
- Common Interface
- Unique Train ID
- RSRD

messages / datasets implemented and used in operation in its own IT system (see Annexes).

Mickael VARGA  
European Union Agency for Railways  
Operational Data Unit  
Project Officer  
Email: mickael.varga@era.europa.eu

**Annex – Message / Datasets**

```

<?xml version="1.0" encoding="UTF-8"?>
<PathDetailsMessage xmlns="http://www.era.europa.eu/schemes/TAFTSI/3.0"
xmlns:xsi="http://www.w3.org/2001/XMLSchema-instance"
xsi:schemaLocation="http://www.era.europa.eu/schemes/TAFTSI/3.0 file:///C:/Users/
.../XSD%203.0.0/taf_cat_complete.xsd">
  <MessageHeader>
  <MessageReference>
    <MessageType>2003</MessageType>
    <MessageTypeVersion>3.0.2.0</MessageTypeVersion>
    <MessageIdentifier>c50a3b31-2140-4c8d-b0ae-1faee1cb8aad</MessageIdentifier>
    <MessageDateTime>2023-12-18T11:01:23.423Z</MessageDateTime>
  </MessageReference>
  <SenderReference>c50a3b31-2140-4c8d-b0ae-1faee1cb8aad</SenderReference>
  <Sender>3617</Sender>
  <Recipient>9876</Recipient>
</MessageHeader>
<AdministrativeContactInformation>
  <Name>YYYXXX</Name>
  <Address>Riva Tommaso Gulli 12 - c/o Regus, 34123 - Trieste</Address>
  <eMail>admin@binarysystem.eu</eMail>
  <PhoneNumber>+390406732511</PhoneNumber>
  <FaxNumber>+390406732519</FaxNumber>
  <FreeTextField>Adriafer Srl</FreeTextField>
</AdministrativeContactInformation>
<MessageStatus>1</MessageStatus>
<TypeOfRequest>3</TypeOfRequest>
<TypeOfInformation>01</TypeOfInformation>
<PathInformation>
  <PlannedJourneyLocation>
    <CountryCodeISO>MT</CountryCodeISO>
    <LocationPrimaryCode>12345</LocationPrimaryCode>
    <TimingAtLocation>
      <Timing>
        <Time>03:30:00+00:00</Time>
        <Offset>0</Offset>
        <BookedLocationDateTime>2023-12-
20T03:30:00+00:00</BookedLocationDateTime>
      </Timing>
    </TimingAtLocation>
    <ResponsibleRU>9876</ResponsibleRU>
    <OperationalTrainNumber>11111</OperationalTrainNumber>
  </PlannedJourneyLocation>
  <PlannedJourneyLocation>
    <CountryCodeISO>MT</CountryCodeISO>
    <LocationPrimaryCode>12345</LocationPrimaryCode>
    <TimingAtLocation>
      <Timing>
        <Time>06:14:00+00:00</Time>
        <Offset>0</Offset>
        <BookedLocationDateTime>2023-12-
20T06:14:00+00:00</BookedLocationDateTime>

```

```

    </Timing>
  </TimingAtLocation>
  <ResponsibleRU>9876</ResponsibleRU>
  <OperationalTrainNumber>11111</OperationalTrainNumber>
</PlannedJourneyLocation>
  <PlannedCalendar>
    <ValidityPeriod>
      <StartDateTime>2023-12-20T03:30:00+00:00</StartDateTime>
      <EndDateTime>2023-12-20T06:14:00+00:00</EndDateTime>
    </ValidityPeriod>
  </PlannedCalendar>
</PathInformation>
</PathDetailsMessage>

<?xml version="1.0" encoding="UTF-8"?>
<TrainCompositionMessage xmlns="http://www.era.europa.eu/schemes/TAFTSI/3.0"
xmlns:xsi="http://www.w3.org/2001/XMLSchema-instance"
xsi:schemaLocation="http://www.era.europa.eu/schemes/TAFTSI/3.0
file:///C:/Users/.../XSD%203.0.0/taf_cat_complete.xsd">
  <MessageHeader>
    <MessageReference>
      <MessageType>3003</MessageType>
      <MessageTypeVersion>3.0.2.0</MessageTypeVersion>
      <MessageIdentifier>1b1822ff-a9ce-4962-b8f1-5deedb174ac4</MessageIdentifier>
      <MessageDateTime>2023-12-11T14:49:00.00</MessageDateTime>
    </MessageReference>
    <SenderReference>1b1822ff-a9ce-4962-b8f1-5deedb174ac4</SenderReference>
    <Sender>3617</Sender>
    <Recipient>9876</Recipient>
  </MessageHeader>
  <MessageStatus>1</MessageStatus>
  <TransportOperationalIdentifiers>
    <ObjectType>TR</ObjectType>
    <Company>6543</Company>
    <Core>-----12345</Core>
    <Variant>00</Variant>
    <TimetableYear>2023</TimetableYear>
    <StartDate>2023-12-11</StartDate>
  </TransportOperationalIdentifiers>
  <OperationalTrainNumberIdentifier>
    <OperationalTrainNumber>11111</OperationalTrainNumber>
    <ScheduledTimeAtHandover>2023-12-11T16:31:00.000Z</ScheduledTimeAtHandover>
  </OperationalTrainNumberIdentifier>
  <TrainCompositionJourneySection>
    <JourneySection>
      <JourneySectionDestination>
        <CountryCodeISO>MT</CountryCodeISO>
        <LocationPrimaryCode>12345</LocationPrimaryCode>
        <PrimaryLocationName>City A</PrimaryLocationName>
      </JourneySectionDestination>
      <JourneySectionOrigin>
        <CountryCodeISO>MT</CountryCodeISO>
        <LocationPrimaryCode>12345</LocationPrimaryCode>

```

```

    <PrimaryLocationName>City A</PrimaryLocationName>
  </JourneySectionOrigin>
  <ResponsibilityActualSection>
    <ResponsibleRU>9876</ResponsibleRU>
    <ResponsibleIM>1234</ResponsibleIM>
  </ResponsibilityActualSection>
  <ResponsibilityNextSection>
    <ResponsibleRU>9876</ResponsibleRU>
    <ResponsibleIM>1234</ResponsibleIM>
  </ResponsibilityNextSection>
</JourneySection>
<TrainRunningData>
  <TrainRunningTechData>
    <TrainType>0002</TrainType>
    <TrainWeight>1111</TrainWeight>
    <TrainLength>268</TrainLength>
    <BrakeType>1</BrakeType>
    <BrakeWeight>1111</BrakeWeight>
    <NumberOfVehicles>10</NumberOfVehicles>
    <NumberOfAxles>60</NumberOfAxles>
  </TrainRunningTechData>
  <DangerousGoodsIndicator>0</DangerousGoodsIndicator>
  <Activities>
    <TrainActivity>
      <TrainActivityType>0046</TrainActivityType>
    </TrainActivity>
    <ActivityLocationIdent>
      <CountryCodeISO>MT</CountryCodeISO>
      <LocationPrimaryCode>12345</LocationPrimaryCode>
      <PrimaryLocationName>City A</PrimaryLocationName>
    </ActivityLocationIdent>
  </Activities>
</TrainRunningData>
<LocoIdent>
  <TractionType>22</TractionType>
  <LocoNumber>111111111111</LocoNumber>
  <TractionMode>11</TractionMode>
  <DriverIndication>1</DriverIndication>
</LocoIdent>
<LivestockOrPeopleIndicator>0</LivestockOrPeopleIndicator>
<WagonData>
  <WagonNumberFreight>111111111111</WagonNumberFreight>
  <WagonTrainPosition>1</WagonTrainPosition>
  <WagonOperationalData>
    <BrakeType>1</BrakeType>
    <TotalLoadWeight>1111</TotalLoadWeight>
  </WagonOperationalData>
  <WagonTechData>
    <LengthOverBuffers>2670</LengthOverBuffers>
    <WagonNumberOfAxles>6</WagonNumberOfAxles>
    <HandBrakeBrakedWeight>1111</HandBrakeBrakedWeight>
    <WagonWeightEmpty>99999</WagonWeightEmpty>
  </WagonTechData>
</WagonData>
<WagonData>

```

```

<WagonNumberFreight>1111111111</WagonNumberFreight>
<WagonTrainPosition>2</WagonTrainPosition>
<WagonOperationalData>
  <BrakeType>1</BrakeType>
  <TotalLoadWeight>1111</TotalLoadWeight>
</WagonOperationalData>
<WagonTechData>
  <LengthOverBuffers>2670</LengthOverBuffers>
  <WagonNumberOfAxles>6</WagonNumberOfAxles>
  <HandBrakeBrakedWeight>1111</HandBrakeBrakedWeight>
  <WagonWeightEmpty>99999</WagonWeightEmpty>
</WagonTechData>
</WagonData>
<WagonData>
  <WagonNumberFreight>1111111111</WagonNumberFreight>
  <WagonTrainPosition>3</WagonTrainPosition>
  <WagonOperationalData>
    <BrakeType>1</BrakeType>
    <TotalLoadWeight>1111</TotalLoadWeight>
  </WagonOperationalData>
  <WagonTechData>
    <LengthOverBuffers>2670</LengthOverBuffers>
    <WagonNumberOfAxles>6</WagonNumberOfAxles>
    <HandBrakeBrakedWeight>1111</HandBrakeBrakedWeight>
    <WagonWeightEmpty>99999</WagonWeightEmpty>
  </WagonTechData>
</WagonData>
<WagonData>
  <WagonNumberFreight>1111111111</WagonNumberFreight>
  <WagonTrainPosition>4</WagonTrainPosition>
  <WagonOperationalData>
    <BrakeType>1</BrakeType>
    <TotalLoadWeight>1111</TotalLoadWeight>
  </WagonOperationalData>
  <WagonTechData>
    <LengthOverBuffers>2670</LengthOverBuffers>
    <WagonNumberOfAxles>6</WagonNumberOfAxles>
    <HandBrakeBrakedWeight>1111</HandBrakeBrakedWeight>
    <WagonWeightEmpty>99999</WagonWeightEmpty>
  </WagonTechData>
</WagonData>
<WagonData>
  <WagonNumberFreight>1111111111</WagonNumberFreight>
  <WagonTrainPosition>5</WagonTrainPosition>
  <WagonOperationalData>
    <BrakeType>1</BrakeType>
    <TotalLoadWeight>1111</TotalLoadWeight>
  </WagonOperationalData>
  <WagonTechData>
    <LengthOverBuffers>2670</LengthOverBuffers>
    <WagonNumberOfAxles>6</WagonNumberOfAxles>
    <HandBrakeBrakedWeight>1111</HandBrakeBrakedWeight>
    <WagonWeightEmpty>99999</WagonWeightEmpty>
  </WagonTechData>
</WagonData>

```

```
<WagonData>
  <WagonNumberFreight>1111111111</WagonNumberFreight>
  <WagonTrainPosition>6</WagonTrainPosition>
  <WagonOperationalData>
    <BrakeType>1</BrakeType>
    <TotalLoadWeight>1111</TotalLoadWeight>
  </WagonOperationalData>
  <WagonTechData>
    <LengthOverBuffers>2670</LengthOverBuffers>
    <WagonNumberOfAxles>6</WagonNumberOfAxles>
    <HandBrakeBrakedWeight>1111</HandBrakeBrakedWeight>
    <WagonWeightEmpty>99999</WagonWeightEmpty>
  </WagonTechData>
</WagonData>
<WagonData>
  <WagonNumberFreight>1111111111</WagonNumberFreight>
  <WagonTrainPosition>7</WagonTrainPosition>
  <WagonOperationalData>
    <BrakeType>1</BrakeType>
    <TotalLoadWeight>1111</TotalLoadWeight>
  </WagonOperationalData>
  <WagonTechData>
    <LengthOverBuffers>2670</LengthOverBuffers>
    <WagonNumberOfAxles>6</WagonNumberOfAxles>
    <HandBrakeBrakedWeight>1111</HandBrakeBrakedWeight>
    <WagonWeightEmpty>99999</WagonWeightEmpty>
  </WagonTechData>
</WagonData>
<WagonData>
  <WagonNumberFreight>1111111111</WagonNumberFreight>
  <WagonTrainPosition>8</WagonTrainPosition>
  <WagonOperationalData>
    <BrakeType>1</BrakeType>
    <TotalLoadWeight>1111</TotalLoadWeight>
  </WagonOperationalData>
  <WagonTechData>
    <LengthOverBuffers>2670</LengthOverBuffers>
    <WagonNumberOfAxles>6</WagonNumberOfAxles>
    <HandBrakeBrakedWeight>1111</HandBrakeBrakedWeight>
    <WagonWeightEmpty>99999</WagonWeightEmpty>
  </WagonTechData>
</WagonData>
<WagonData>
  <WagonNumberFreight>1111111111</WagonNumberFreight>
  <WagonTrainPosition>9</WagonTrainPosition>
  <WagonOperationalData>
    <BrakeType>1</BrakeType>
    <TotalLoadWeight>1111</TotalLoadWeight>
  </WagonOperationalData>
  <WagonTechData>
    <LengthOverBuffers>2670</LengthOverBuffers>
    <WagonNumberOfAxles>6</WagonNumberOfAxles>
    <HandBrakeBrakedWeight>1111</HandBrakeBrakedWeight>
    <WagonWeightEmpty>99999</WagonWeightEmpty>
  </WagonTechData>
</WagonData>
```

```

</WagonData>
<WagonData>
  <WagonNumberFreight>1111111111</WagonNumberFreight>
  <WagonTrainPosition>10</WagonTrainPosition>
  <WagonOperationalData>
    <BrakeType>1</BrakeType>
    <TotalLoadWeight>1111</TotalLoadWeight>
  </WagonOperationalData>
  <WagonTechData>
    <LengthOverBuffers>2670</LengthOverBuffers>
    <WagonNumberOfAxles>6</WagonNumberOfAxles>
    <HandBrakeBrakedWeight>1111</HandBrakeBrakedWeight>
    <WagonWeightEmpty>99999</WagonWeightEmpty>
  </WagonTechData>
</WagonData>
</TrainCompositionJourneySection>
</TrainCompositionMessage>

<?xml version="1.0" encoding="utf-8"?>
<TrainReadyMessage xmlns="http://www.era.europa.eu/schemes/TAFTSI/3.0"
xmlns:xsi="http://www.w3.org/2001/XMLSchema-instance"
xsi:schemaLocation="http://www.era.europa.eu/schemes/TAFTSI/3.0
file:///C:/Users/.../XSD%203.0.0/taf_cat_complete.xsd">
  <MessageHeader>
    <MessageReference>
      <MessageType>3006</MessageType>
      <MessageTypeVersion>3.0.2.0</MessageTypeVersion>
      <MessageIdentifier>007ddd2-b28b-46b5-94fd-8e6ffb98c167</MessageIdentifier>
      <MessageDateTime>2005-12-05T12:55:00.00</MessageDateTime>
    </MessageReference>
    <Sender>3617</Sender>
    <Recipient>9876</Recipient>
  </MessageHeader>
  <MessageStatus>1</MessageStatus>
  <OperationalTrainNumberIdentifier>
    <OperationalTrainNumber>1111</OperationalTrainNumber>
  </OperationalTrainNumberIdentifier>
  <ResponsibleRU>9876</ResponsibleRU>
  <TrainLocation>
    <CountryCodeISO>MT</CountryCodeISO>
    <LocationPrimaryCode>12345</LocationPrimaryCode>
    <PrimaryLocationName>City A</PrimaryLocationName>
    <LocationSubsidiaryIdentification>
      <LocationSubsidiaryCode
        p5:LocationSubsidiaryTypeCode="42"
xmlns:p5="http://www.era.europa.eu/schemes/TAFTSI/3.0">string</LocationSubsidiaryCode
    >
      <AllocationCompany>3617</AllocationCompany>
    </LocationSubsidiaryIdentification>
  </TrainLocation>
  <TrainReadyStatus>
    <TrainReady>1</TrainReady>
    <TrainDelay>
      <AgainstBooked>+0298</AgainstBooked>

```



```

    </TrainDelay>
    <DelayCause>92</DelayCause>
  </TrainReadyStatus>
  <TrainStartTime>2023-12-05T12:58:00.00</TrainStartTime>
  <TrainReadyTime>2023-12-05T12:55:00.00</TrainReadyTime>
</TrainReadyMessage>

<?xml version="1.0" encoding="UTF-8"?>
<TrainRunningForecastMessage xmlns="http://www.era.europa.eu/schemes/TAFTSI/3.0"
xmlns:xsi="http://www.w3.org/2001/XMLSchema-instance"
xsi:schemaLocation="http://www.era.europa.eu/schemes/TAFTSI/3.0
file:///C:/Users/.../XSD%203.0.0/taf_cat_complete.xsd">
  <MessageHeader>
    <MessageReference>
      <MessageType>4004</MessageType>
      <MessageTypeVersion>2.5.0.0</MessageTypeVersion>
      <MessageIdentifier>460291e3-d54a-4bfa-98c4-7d41797329ad</MessageIdentifier>
      <MessageDateTime>2005-12-05T12:54:00.00</MessageDateTime>
    </MessageReference>
    <SenderReference>460291e3-d54a-4bfa-98c4-7d41797329ad</SenderReference>
    <n1:Sender n1:CI_InstanceNumber="01" xmlns=""
xmlns:ns="http://www.example.com/"
xmlns:n1="http://www.era.europa.eu/schemes/TAFTSI/3.0">3617</n1:Sender>
    <Recipient>9876</Recipient>
  </MessageHeader>
  <MessageStatus>1</MessageStatus>
  <OperationalTrainNumberIdentifier>
    <OperationalTrainNumber>11111</OperationalTrainNumber>
  </OperationalTrainNumberIdentifier>
  <TrainLocationReport>
    <Location>
      <CountryCodeISO>MT</CountryCodeISO>
      <LocationPrimaryCode>12345</LocationPrimaryCode>
    </Location>
    <LocationDateTime>2023-12-05T11:58:00.00</LocationDateTime>
    <TrainLocationStatus>01</TrainLocationStatus>
  </TrainLocationReport>
</TrainRunningForecastMessage>

```

```

<?xml version="1.0" encoding="UTF-8"?>
<TrainRunningInformationMessage xmlns="http://www.era.europa.eu/schemes/TAFTSI/3.0"
xmlns:xsi="http://www.w3.org/2001/XMLSchema-instance"
xsi:schemaLocation="http://www.era.europa.eu/schemes/TAFTSI/3.0
file:///C:/Users/.../XSD%203.0.0/taf_cat_complete.xsd">
  <MessageHeader>
    <MessageReference>
      <MessageType>4005</MessageType>
      <MessageTypeVersion>2.5.0.0</MessageTypeVersion>
      <MessageIdentifier>5d6ccdf8-44a1-4d00-af08-17d7319bdfef</MessageIdentifier>
      <MessageDateTime>2023-12-05T14:19:00.351Z</MessageDateTime>
    </MessageReference>
    <SenderReference>5d6ccdf8-44a1-4d00-af08-17d7319bdfef</SenderReference>

```

```

    <Sender n1:CI_InstanceNumber="01"
xmlns:n1="http://www.era.europa.eu/schemes/TAFTSI/3.0">3617</Sender>
    <Recipient>9876</Recipient>
  </MessageHeader>
  <MessageStatus>1</MessageStatus>
  <TrainOperationalIdentification>
    <TransportOperationalIdentifiers>
      <ObjectType>TR</ObjectType>
      <Company>6543</Company>
      <Core>-----12345</Core>
      <Variant>00</Variant>
      <TimetableYear>2023</TimetableYear>
      <StartDate>2023-12-05</StartDate>
    </TransportOperationalIdentifiers>
    <RelatedTransportOperationalIdentifiers>
      <ObjectType>TR</ObjectType>
      <Company>6543</Company>
      <Core>-----12345</Core>
      <Variant>00</Variant>
      <TimetableYear>2023</TimetableYear>
      <StartDate>2023-12-05</StartDate>
    </RelatedTransportOperationalIdentifiers>
  </TrainOperationalIdentification>
  <OperationalTrainNumberIdentifier>
    <OperationalTrainNumber>11111</OperationalTrainNumber>
    <ScheduledTimeAtHandover>2023-12-05T14:33:00+00:00</ScheduledTimeAtHandover>
    <ScheduledDateTimeAtTransfer>2023-12-
05T14:18:00+00:00</ScheduledDateTimeAtTransfer>
  </OperationalTrainNumberIdentifier>
  <ReferenceOTN>
    <OperationalTrainNumberIdentifier>
      <OperationalTrainNumber>11111</OperationalTrainNumber>
      <ScheduledTimeAtHandover>2023-12-05T14:33:00+00:00</ScheduledTimeAtHandover>
      <ScheduledDateTimeAtTransfer>2023-12-
05T14:18:00+00:00</ScheduledDateTimeAtTransfer>
    </OperationalTrainNumberIdentifier>
  </ReferenceOTN>
  <ResponsibleRU>9876</ResponsibleRU>
  <TrainLocationReport>
    <Location>
      <CountryCodeISO>MT</CountryCodeISO>
      <LocationPrimaryCode>12345</LocationPrimaryCode>
      <PrimaryLocationName>City A</PrimaryLocationName>
    </Location>
    <LocationDateTime>2023-12-05T14:18:00+00:00</LocationDateTime>
    <TrainLocationStatus>01</TrainLocationStatus>
    <BookedLocationDateTime>2023-12-05T08:50:00+00:00</BookedLocationDateTime>
    <TrainDelay>
      <AgainstBooked>+0328</AgainstBooked>
    </TrainDelay>
  </TrainLocationReport>
  <TransfereeIM>9876</TransfereeIM>
</TrainRunningInformationMessage>

```

```

<?xml version="1.0" encoding="UTF-8"?>
<TrainDelayCauseMessage xmlns="http://www.era.europa.eu/schemes/TAFTSI/3.0"
xmlns:xsi="http://www.w3.org/2001/XMLSchema-instance"
xsi:schemaLocation="http://www.era.europa.eu/schemes/TAFTSI/3.0
file:///C:/Users/.../XSD%203.0.0/taf_cat_complete.xsd">
  <MessageHeader>
    <MessageReference>
      <MessageType>4001</MessageType>
      <MessageTypeVersion>2.5.0.0</MessageTypeVersion>
      <MessageIdentifier>5f3f647b-ffcf-43d1-a74d-af94c688eeaa</MessageIdentifier>
      <MessageDateTime>2023-12-05T14:20:00.351Z</MessageDateTime>
    </MessageReference>
    <SenderReference>5f3f647b-ffcf-43d1-a74d-af94c688eeaa</SenderReference>
    <Sender n1:CI_InstanceNumber="01"
xmlns:n1="http://www.era.europa.eu/schemes/TAFTSI/3.0">3617</Sender>
    <Recipient>9876</Recipient>
  </MessageHeader>
  <MessageStatus>1</MessageStatus>
  <TrainOperationalIdentification>
    <TransportOperationalIdentifiers>
      <ObjectType>TR</ObjectType>
      <Company>6543</Company>
      <Core>-----12345</Core>
      <Variant>00</Variant>
      <TimetableYear>2023</TimetableYear>
      <StartDate>2023-12-05</StartDate>
    </TransportOperationalIdentifiers>
  </TrainOperationalIdentification>
  <OperationalTrainNumberIdentifier>
    <OperationalTrainNumber>11111</OperationalTrainNumber>
    <ScheduledTimeAtHandover>2023-12-05T14:33:00+00:00</ScheduledTimeAtHandover>
    <ScheduledDateTimeAtTransfer>2023-12-
05T14:18:00+00:00</ScheduledDateTimeAtTransfer>
  </OperationalTrainNumberIdentifier>
  <DelayEventReport>
    <DelayLocation>
      <CountryCodeISO>MT</CountryCodeISO>
      <LocationPrimaryCode>12345</LocationPrimaryCode>
    </DelayLocation>
    <TrainLocationStatus>03</TrainLocationStatus>
    <DelayCauseTime>
      <DelayCause>92</DelayCause>
      <DelayMinutes>+0328</DelayMinutes>
      <DelayEventDateTime>2023-12-05T14:18:00+00:00</DelayEventDateTime>
    </DelayCauseTime>
  </DelayEventReport>
</TrainDelayCauseMessage>

```

```

<?xml version="1.0" encoding="UTF-8"?>
<TrainRunningInterruptionMessage xmlns="http://www.era.europa.eu/schemes/TAFTSI/3.0"
xmlns:xsi="http://www.w3.org/2001/XMLSchema-instance"
xsi:schemaLocation="http://www.era.europa.eu/schemes/TAFTSI/3.0
file:///C:/Users/.../XSD%203.0.0/taf_cat_complete.xsd">
  <MessageHeader>

```

```

    <MessageReference>
      <MessageType>4006</MessageType>
      <MessageTypeVersion>3.0.2.0</MessageTypeVersion>
      <MessageIdentifier>63962d49-7e10-4f4e-bb51-8486ea3b8ed0</MessageIdentifier>
      <MessageDateTime>2023-12-22T10:23:00+01:00</MessageDateTime>
    </MessageReference>
    <Sender>3617</Sender>
    <Recipient>9876</Recipient>
  </MessageHeader>
  <MessageStatus>1</MessageStatus>
  <OperationalTrainNumberIdentifier>
    <OperationalTrainNumber>11111</OperationalTrainNumber>
    <ScheduledTimeAtHandover>2023-12-22T10:36:00+02:00</ScheduledTimeAtHandover>
    <ScheduledDateTimeAtTransfer>2023-12-
22T10:24:00+02:00</ScheduledDateTimeAtTransfer>
  </OperationalTrainNumberIdentifier>
  <ReferenceOTN>
    <OperationalTrainNumberIdentifier>
      <OperationalTrainNumber>11111</OperationalTrainNumber>
      <ScheduledTimeAtHandover>2023-12-22T10:36:00+02:00</ScheduledTimeAtHandover>
      <ScheduledDateTimeAtTransfer>2023-12-
22T10:24:00+02:00</ScheduledDateTimeAtTransfer>
    </OperationalTrainNumberIdentifier>
  </ReferenceOTN>
  <ResponsibleRU>9876</ResponsibleRU>
  <InterruptionPoint>
    <Location>
      <CountryCodeISO>MT</CountryCodeISO>
      <LocationPrimaryCode>12345</LocationPrimaryCode>
      <PrimaryLocationName>City A</PrimaryLocationName>
    </Location>
    <Interruption>
      <InterruptionReason>95</InterruptionReason>
      <InterruptionDateTime>2023-12-22T10:23:00+01:00</InterruptionDateTime>
      <InterruptionDescription>Svio locomotore all'interno del Punto Franco Nuovo,
impossibilità a fare estrazione materiale</InterruptionDescription>
      <InternalReferenceIdentifier>20572</InternalReferenceIdentifier>
    </Interruption>
  </InterruptionPoint>
  <TrainNotAtInterruptionPoint>1</TrainNotAtInterruptionPoint>
  <TransferPoint>
    <CountryCodeISO>MT</CountryCodeISO>
    <LocationPrimaryCode>12345</LocationPrimaryCode>
    <PrimaryLocationName>City A</PrimaryLocationName>
    <LocationSubsidiaryIdentification>
      <LocationSubsidiaryCode
p5:LocationSubsidiaryTypeCode="42"
xmlns:p5="http://www.era.europa.eu/schemes/TAFTSI/3.0">
      </LocationSubsidiaryCode>
      <AllocationCompany>3617</AllocationCompany>
    </LocationSubsidiaryIdentification>
  </TransferPoint>
  <TransfereeIM>9876</TransfereeIM>
</TrainRunningInterruptionMessage>

```

```

<?xml version="1.0" encoding="utf-8"?>
<ConsignmentOrderMessage xmlns="http://www.era.europa.eu/schemes/TAFTSI/3.0"
xmlns:xsi="http://www.w3.org/2001/XMLSchema-instance"
xsi:schemaLocation="http://www.era.europa.eu/schemes/TAFTSI/3.0
file:///C:/Users/.../XSD%203.0.0/taf_cat_complete.xsd">
  <MessageHeader>
    <MessageReference>
      <MessageType>1000</MessageType>
      <MessageTypeVersion>3.0.2.0</MessageTypeVersion>
      <MessageIdentifier>11e6cd99-8818-447b-90d7-f2678bff6aac</MessageIdentifier>
      <MessageDateTime>2023-02-20T00:50:00+00:00</MessageDateTime>
    </MessageReference>
    <SenderReference>11e6cd99-8818-447b-90d7-f2678bff6aac</SenderReference>
    <Sender>3617</Sender>
    <Recipient>9876</Recipient>
  </MessageHeader>
  <COMS>
    <COM_Header>
      <SendingRU>3617</SendingRU>
      <ReceivingRU>3617</ReceivingRU>
      <ConsignmentOrderType>DRU</ConsignmentOrderType>
      <COM_PreparationDatetime>2023-02-20T00:50:00+00:00</COM_PreparationDatetime>
      <DossierNumber>987654321</DossierNumber>
      <VersionNumber>1</VersionNumber>
    </COM_Header>
    <COM>
      <AcceptancePoint>
        <Station>
          <CountryCodeISO>MT</CountryCodeISO>
          <LocationPrimaryCode>12345</LocationPrimaryCode>
        </Station>
        <ResponsibleRU>9876</ResponsibleRU>
        <COM_ConsignmentNumber>904548</COM_ConsignmentNumber>
        <LoadingFacility>
          <AdministrativeContactInformation>
            <Name>YYYYXX</Name>
            <Address>Riva Tommaso Gulli 12 - c/o Regus, 34123 - Trieste</Address>
            <eMail>admin@binarysystem.eu</eMail>
            <PhoneNumber>+390406732511</PhoneNumber>
            <FaxNumber>+390406732519</FaxNumber>
            <FreeTextField>Adriafer Srl</FreeTextField>
          </AdministrativeContactInformation>
        </LoadingFacility>
      </AcceptancePoint>
      <DeliveryPoint>
        <Station>
          <CountryCodeISO>MT</CountryCodeISO>
          <LocationPrimaryCode>12345</LocationPrimaryCode>
        </Station>
        <NextResponsibleRU>3617</NextResponsibleRU>
      </DeliveryPoint>
      <Customers>
        <CustomerType>CR</CustomerType>
        <AdministrativeContactInformation>

```

```

        <Name>YYYYXX</Name>
        <Address>Riva Tommaso Gulli 12 - c/o Regus, 34123 - Trieste</Address>
        <eMail>admin@binarysystem.eu</eMail>
        <PhoneNumber>+390406732511</PhoneNumber>
        <FaxNumber>+390406732519</FaxNumber>
        <FreeTextField>Adriafer Srl</FreeTextField>
    </AdministrativeContactInformation>
    <LeadRU>9999</LeadRU>
</Customers>
<ContractNumber>XXXYYY</ContractNumber>
<Wagons>
    <WagonNumberFreight>11111111111</WagonNumberFreight>
    <WagonDetails>
        <LoadingStatus>1</LoadingStatus>
    </WagonDetails>
    <Goods>
        <GrossWeight>1111</GrossWeight>
    </Goods>
</Wagons>
<Wagons>
    <WagonNumberFreight>11111111111</WagonNumberFreight>
    <WagonDetails>
        <LoadingStatus>1</LoadingStatus>
    </WagonDetails>
    <Goods>
        <GrossWeight>1111</GrossWeight>
    </Goods>
</Wagons>
<Wagons>
    <WagonNumberFreight>11111111111</WagonNumberFreight>
    <WagonDetails>
        <LoadingStatus>1</LoadingStatus>
    </WagonDetails>
    <Goods>
        <GrossWeight>1111</GrossWeight>
    </Goods>
</Wagons>
<Wagons>
    <WagonNumberFreight>11111111111</WagonNumberFreight>
    <WagonDetails>
        <LoadingStatus>1</LoadingStatus>
    </WagonDetails>
    <Goods>
        <GrossWeight>1111</GrossWeight>
    </Goods>
</Wagons>
<Wagons>
    <WagonNumberFreight>11111111111</WagonNumberFreight>
    <WagonDetails>
        <LoadingStatus>1</LoadingStatus>
    </WagonDetails>
    <Goods>
        <GrossWeight>1111</GrossWeight>
    </Goods>
</Wagons>
</Wagons>

```

```
<Wagons>
  <WagonNumberFreight>11111111111</WagonNumberFreight>
  <WagonDetails>
    <LoadingStatus>1</LoadingStatus>
  </WagonDetails>
  <Goods>
    <GrossWeight>1111</GrossWeight>
  </Goods>
</Wagons>
<Wagons>
  <WagonNumberFreight>11111111111</WagonNumberFreight>
  <WagonDetails>
    <LoadingStatus>1</LoadingStatus>
  </WagonDetails>
  <Goods>
    <GrossWeight>1111</GrossWeight>
  </Goods>
</Wagons>
<Wagons>
  <WagonNumberFreight>11111111111</WagonNumberFreight>
  <WagonDetails>
    <LoadingStatus>1</LoadingStatus>
  </WagonDetails>
  <Goods>
    <GrossWeight>1111</GrossWeight>
  </Goods>
</Wagons>
<Wagons>
  <WagonNumberFreight>11111111111</WagonNumberFreight>
  <WagonDetails>
    <LoadingStatus>1</LoadingStatus>
  </WagonDetails>
  <Goods>
    <GrossWeight>1111</GrossWeight>
  </Goods>
</Wagons>
<Wagons>
  <WagonNumberFreight>11111111111</WagonNumberFreight>
  <WagonDetails>
    <LoadingStatus>1</LoadingStatus>
  </WagonDetails>
  <Goods>
    <GrossWeight>1111</GrossWeight>
  </Goods>
</Wagons>
<Wagons>
  <WagonNumberFreight>11111111111</WagonNumberFreight>
  <WagonDetails>
    <LoadingStatus>1</LoadingStatus>
  </WagonDetails>
  <Goods>
    <GrossWeight>1111</GrossWeight>
  </Goods>
</Wagons>
<Wagons>
  <WagonNumberFreight>11111111111</WagonNumberFreight>
  <WagonDetails>
    <LoadingStatus>1</LoadingStatus>
  </WagonDetails>
  <Goods>
    <GrossWeight>1111</GrossWeight>
  </Goods>
</Wagons>
<Wagons>
```

```
<WagonNumberFreight>11111111111</WagonNumberFreight>
<WagonDetails>
  <LoadingStatus>1</LoadingStatus>
</WagonDetails>
  <Goods>
    <GrossWeight>1111</GrossWeight>
  </Goods>
</Wagons>
<Wagons>
  <WagonNumberFreight>11111111111</WagonNumberFreight>
  <WagonDetails>
    <LoadingStatus>1</LoadingStatus>
  </WagonDetails>
  <Goods>
    <GrossWeight>1111</GrossWeight>
  </Goods>
</Wagons>
<Wagons>
  <WagonNumberFreight>11111111111</WagonNumberFreight>
  <WagonDetails>
    <LoadingStatus>1</LoadingStatus>
  </WagonDetails>
  <Goods>
    <GrossWeight>1111</GrossWeight>
  </Goods>
</Wagons>
<Wagons>
  <WagonNumberFreight>11111111111</WagonNumberFreight>
  <WagonDetails>
    <LoadingStatus>1</LoadingStatus>
  </WagonDetails>
  <Goods>
    <GrossWeight>1111</GrossWeight>
  </Goods>
</Wagons>
<Wagons>
  <WagonNumberFreight>11111111111</WagonNumberFreight>
  <WagonDetails>
    <LoadingStatus>1</LoadingStatus>
  </WagonDetails>
  <Goods>
    <GrossWeight>1111</GrossWeight>
  </Goods>
</Wagons>
<Wagons>
  <WagonNumberFreight>11111111111</WagonNumberFreight>
  <WagonDetails>
    <LoadingStatus>1</LoadingStatus>
  </WagonDetails>
  <Goods>
    <GrossWeight>1111</GrossWeight>
  </Goods>
</Wagons>
</COM>
</COMS>
```



```

<COMS>
  <COM_Header>
    <SendingRU>3617</SendingRU>
    <ReceivingRU>3617</ReceivingRU>
    <MessageReferenceNumber>b4c745c4-f46d-4949</MessageReferenceNumber>
    <ConsignmentOrderType>ORU</ConsignmentOrderType>
    <COM_PreparationDatetime>2023-02-20T00:50:00+00:00</COM_PreparationDatetime>
    <DossierNumber>987654321</DossierNumber>
    <VersionNumber>1</VersionNumber>
  </COM_Header>
</COM>
  <AcceptancePoint>
    <Station>
      <CountryCodeISO>MT</CountryCodeISO>
      <LocationPrimaryCode>12345</LocationPrimaryCode>
    </Station>
    <ProductionStation>
      <Location>
        <CountryCodeISO>MT</CountryCodeISO>
        <LocationPrimaryCode>12345</LocationPrimaryCode>
      </Location>
    </ProductionStation>
    <ResponsibleRU>9876</ResponsibleRU>
    <COM_ConsignmentNumber>904548</COM_ConsignmentNumber>
    <LoadingFacility>
      <AdministrativeContactInformation>
        <Name>YYYXXX</Name>
        <Address>Riva Tommaso Gulli 12 - c/o Regus, 34123 - Trieste</Address>
        <eMail>admin@binarysystem.eu</eMail>
        <PhoneNumber>+390406732511</PhoneNumber>
        <FaxNumber>+390406732519</FaxNumber>
        <FreeTextField>Adriafer Srl</FreeTextField>
      </AdministrativeContactInformation>
    </LoadingFacility>
  </AcceptancePoint>
  <DeliveryPoint>
    <Station>
      <CountryCodeISO>MT</CountryCodeISO>
      <LocationPrimaryCode>12345</LocationPrimaryCode>
    </Station>
    <ProductionStation>
      <Location>
        <CountryCodeISO>MT</CountryCodeISO>
        <LocationPrimaryCode>12345</LocationPrimaryCode>
      </Location>
    </ProductionStation>
  </DeliveryPoint>
  <Customers>
    <CustomerType>CR</CustomerType>
    <AdministrativeContactInformation>
      <Name>YYYXXX</Name>
      <Address>Riva Tommaso Gulli 12 - c/o Regus, 34123 - Trieste</Address>
      <eMail>admin@binarysystem.eu</eMail>
      <PhoneNumber>+390406732511</PhoneNumber>
      <FaxNumber>+390406732519</FaxNumber>
  </Customers>

```

```
    <FreeTextField>Adriafer Srl</FreeTextField>
  </AdministrativeContactInformation>
  <LeadRU>9999</LeadRU>
</Customers>
<ContractNumber>XXXYYY</ContractNumber>
<Wagons>
  <WagonNumberFreight>11111111111</WagonNumberFreight>
  <WagonDetails>
    <LoadingStatus>1</LoadingStatus>
  </WagonDetails>
  <Goods>
    <GrossWeight>1111</GrossWeight>
  </Goods>
</Wagons>
<Wagons>
  <WagonNumberFreight>11111111111</WagonNumberFreight>
  <WagonDetails>
    <LoadingStatus>1</LoadingStatus>
  </WagonDetails>
  <Goods>
    <GrossWeight>1111</GrossWeight>
  </Goods>
</Wagons>
<Wagons>
  <WagonNumberFreight>11111111111</WagonNumberFreight>
  <WagonDetails>
    <LoadingStatus>1</LoadingStatus>
  </WagonDetails>
  <Goods>
    <GrossWeight>1111</GrossWeight>
  </Goods>
</Wagons>
<Wagons>
  <WagonNumberFreight>11111111111</WagonNumberFreight>
  <WagonDetails>
    <LoadingStatus>1</LoadingStatus>
  </WagonDetails>
  <Goods>
    <GrossWeight>1111</GrossWeight>
  </Goods>
</Wagons>
<Wagons>
  <WagonNumberFreight>11111111111</WagonNumberFreight>
  <WagonDetails>
    <LoadingStatus>1</LoadingStatus>
  </WagonDetails>
  <Goods>
    <GrossWeight>1111</GrossWeight>
  </Goods>
</Wagons>
<Wagons>
  <WagonNumberFreight>11111111111</WagonNumberFreight>
  <WagonDetails>
    <LoadingStatus>1</LoadingStatus>
  </WagonDetails>
  <Goods>
    <GrossWeight>1111</GrossWeight>
  </Goods>
</Wagons>
<Wagons>
  <WagonNumberFreight>11111111111</WagonNumberFreight>
  <WagonDetails>
    <LoadingStatus>1</LoadingStatus>
  </WagonDetails>
  <Goods>
    <GrossWeight>1111</GrossWeight>
  </Goods>
</Wagons>
<Wagons>
  <WagonNumberFreight>11111111111</WagonNumberFreight>
  <WagonDetails>
    <LoadingStatus>1</LoadingStatus>
  </WagonDetails>
```

```
<Goods>
  <GrossWeight>1111</GrossWeight>
</Goods>
</Wagons>
<Wagons>
  <WagonNumberFreight>111111111111</WagonNumberFreight>
  <WagonDetails>
    <LoadingStatus>1</LoadingStatus>
  </WagonDetails>
  <Goods>
    <GrossWeight>1111</GrossWeight>
  </Goods>
</Wagons>
<Wagons>
  <WagonNumberFreight>111111111111</WagonNumberFreight>
  <WagonDetails>
    <LoadingStatus>1</LoadingStatus>
  </WagonDetails>
  <Goods>
    <GrossWeight>1111</GrossWeight>
  </Goods>
</Wagons>
<Wagons>
  <WagonNumberFreight>111111111111</WagonNumberFreight>
  <WagonDetails>
    <LoadingStatus>1</LoadingStatus>
  </WagonDetails>
  <Goods>
    <GrossWeight>1111</GrossWeight>
  </Goods>
</Wagons>
<Wagons>
  <WagonNumberFreight>111111111111</WagonNumberFreight>
  <WagonDetails>
    <LoadingStatus>1</LoadingStatus>
  </WagonDetails>
  <Goods>
    <GrossWeight>1111</GrossWeight>
  </Goods>
</Wagons>
<Wagons>
  <WagonNumberFreight>111111111111</WagonNumberFreight>
  <WagonDetails>
    <LoadingStatus>1</LoadingStatus>
  </WagonDetails>
  <Goods>
    <GrossWeight>1111</GrossWeight>
  </Goods>
</Wagons>
<Wagons>
  <WagonNumberFreight>111111111111</WagonNumberFreight>
  <WagonDetails>
    <LoadingStatus>1</LoadingStatus>
  </WagonDetails>
  <Goods>
    <GrossWeight>1111</GrossWeight>
  </Goods>
</Wagons>
<Wagons>
  <WagonNumberFreight>111111111111</WagonNumberFreight>
  <WagonDetails>
    <LoadingStatus>1</LoadingStatus>
  </WagonDetails>
  <Goods>
    <GrossWeight>1111</GrossWeight>
  </Goods>
</Wagons>
```

```

        <GrossWeight>1111</GrossWeight>
    </Goods>
</Wagons>
<Wagons>
    <WagonNumberFreight>111111111111</WagonNumberFreight>
    <WagonDetails>
        <LoadingStatus>1</LoadingStatus>
    </WagonDetails>
    <Goods>
        <GrossWeight>1111</GrossWeight>
    </Goods>
</Wagons>
<Wagons>
    <WagonNumberFreight>111111111111</WagonNumberFreight>
    <WagonDetails>
        <LoadingStatus>1</LoadingStatus>
    </WagonDetails>
    <Goods>
        <GrossWeight>1111</GrossWeight>
    </Goods>
</Wagons>
<Wagons>
    <WagonNumberFreight>111111111111</WagonNumberFreight>
    <WagonDetails>
        <LoadingStatus>1</LoadingStatus>
    </WagonDetails>
    <Goods>
        <GrossWeight>1111</GrossWeight>
    </Goods>
</Wagons>
<Wagons>
    <WagonNumberFreight>111111111111</WagonNumberFreight>
    <WagonDetails>
        <LoadingStatus>1</LoadingStatus>
    </WagonDetails>
    <Goods>
        <GrossWeight>1111</GrossWeight>
    </Goods>
</Wagons>
</COM>
</COMS>
</ConsignmentOrderMessage>

<WagonETI_ETA_Message xmlns="http://www.era.europa.eu/schemes/TAFTSI/3.0"
xmlns:xsi="http://www.w3.org/2001/XMLSchema-instance"

```

```

xsi:schemaLocation="http://www.era.europa.eu/schemes/TAFTSI/3.0
file:///C:/Users/.../XSD%203.0.0/taf_cat_complete.xsd">
  <MessageHeader>
    <MessageReference>
      <MessageType>5006</MessageType>
      <MessageTypeVersion>2.5.0.0</MessageTypeVersion>
      <MessageIdentifier>11acd340-c4cd-4ce8-ab93-
d68570525675</MessageIdentifier>
      <MessageDateTime>2023-10-31T15:37:50.347Z</MessageDateTime>
    </MessageReference>
    <Sender n1:CI_InstanceNumber="01"
xmlns:n1="http://www.era.europa.eu/schemes/TAFTSI/3.0">3617</Sender>
    <Recipient>9876</Recipient>
  </MessageHeader>
  <RelatedReference>
    <RelatedType>5006</RelatedType>
    <RelatedIdentifier>WagonETI_ETA_Message</RelatedIdentifier>
    <RelatedMessageDateTime>2023-10-
31T15:37:35.352Z</RelatedMessageDateTime>
  </RelatedReference>
  <WagonInformation>
    <WagonNumberFreight>11111111111</WagonNumberFreight>
    <LoadingStatus>1</LoadingStatus>
  </WagonInformation>
  <ArrivalInterchangeReport>
    <Source>Estimated time of arrival</Source>
    <Location>
      <CountryCodeISO>MT</CountryCodeISO>
      <LocationPrimaryCode>12345</LocationPrimaryCode>
    </Location>
    <ArrivalTimeAtLocation>2023-10-31T20:56:00.000Z</ArrivalTimeAtLocation>
    <TrainID>
      <ObjectType>TR</ObjectType>
      <Company>6543</Company>
      <Core>-----12345</Core>
      <Variant>00</Variant>
      <TimetableYear>2023</TimetableYear>
      <StartDate>2023-05-27</StartDate>
    </TrainID>
  </ArrivalInterchangeReport>
</WagonETI_ETA_Message>

<WagonYardDepartureMessage xmlns="http://www.era.europa.eu/schemes/TAFTSI/3.0"
xmlns:xsi="http://www.w3.org/2001/XMLSchema-instance"
xsi:schemaLocation="http://www.era.europa.eu/schemes/TAFTSI/3.0
file:///C:/Users/.../XSD%203.0.0/taf_cat_complete.xsd">
  <MessageHeader>
    <MessageReference>
      <MessageType>5016</MessageType>
      <MessageTypeVersion>2.5.0.0</MessageTypeVersion>
      <MessageIdentifier>61acg993-q4hj-4xv8-ab66-
d68912525675</MessageIdentifier>
      <MessageDateTime>2023-10-31T15:34:21.802Z</MessageDateTime>
    </MessageReference>

```

```

    <Sender n1:CI_InstanceNumber="01"
xmlns:n1="http://www.era.europa.eu/schemes/TAFTSI/3.0">3617</Sender>
    <Recipient>9876</Recipient>
  </MessageHeader>
  <WagonNumberFreight>11111111111</WagonNumberFreight>
  <YardDeparture>
    <Location>
      <CountryCodeISO>MT</CountryCodeISO>
      <LocationPrimaryCode>12345</LocationPrimaryCode>
    </Location>
    <DepartureTimeAtLocation>2023-10-
31T18:40:00.000Z</DepartureTimeAtLocation>
    </YardDeparture>
  </WagonYardDepartureMessage>

```

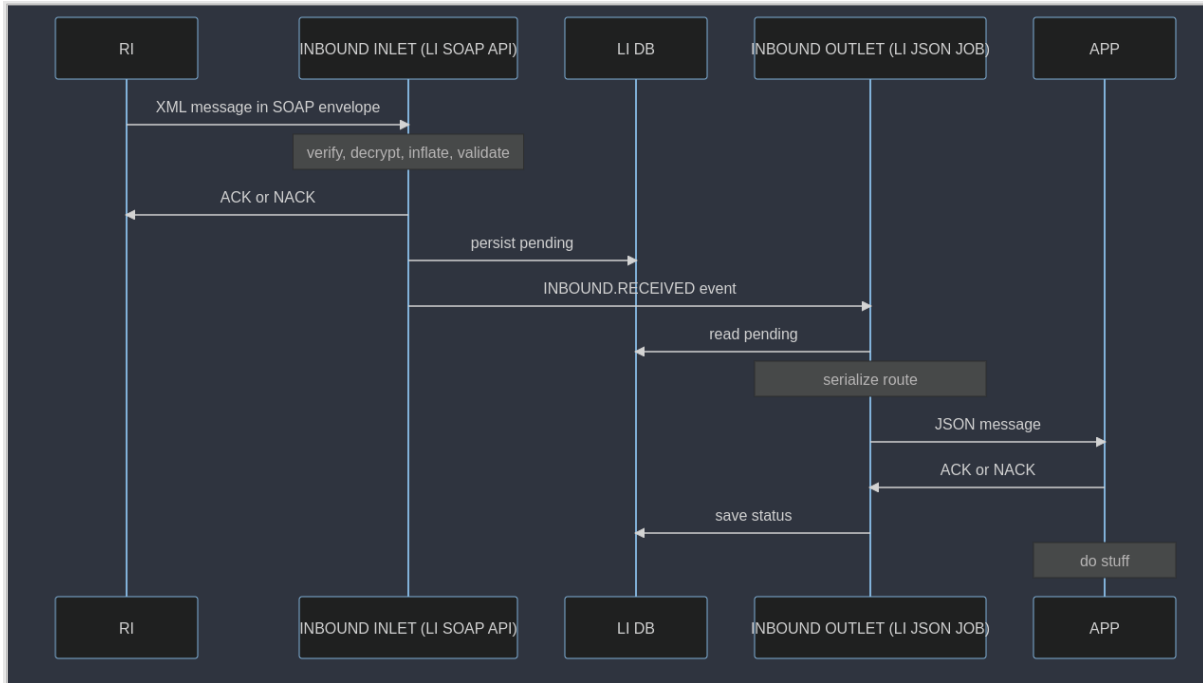
```

<?xml version="1.0" encoding="utf-8"?>
<RollingStockDatasetMessage xmlns="http://www.era.europa.eu/schemes/TAFTSI/3.4"
xmlns:xsi="http://www.w3.org/2001/XMLSchema-instance"
xsi:schemaLocation="http://www.era.europa.eu/schemes/TAFTSI/3.4
file:///C:/Users/vargami/OneDrive%20-
%20European%20Union%20Agency%20for%20Railways%20(ERA)/Desktop/Telematics/Compliance%20
0mapping/IRAIL/Captrain%20Italy/XSD%203.4.0/taf_cat_complete.xsd">
  <MessageHeader>
    <MessageReference>
      <MessageType>6003</MessageType>
      <MessageTypeVersion>3.4.0.0</MessageTypeVersion>
      <MessageIdentifier>6d8ad302-1e75-4726-981a-95170e01ecfd</MessageIdentifier>
      <MessageDateTime>2024-03-15T17:37:31</MessageDateTime>
    </MessageReference>
    <SenderReference>6d8ad302-1e75-4726-981a-95170e01ecfd</SenderReference>
    <Sender>3617</Sender>
    <MessageDateTimeCreated>2024-03-15T17:37:31</MessageDateTimeCreated>
    <Recipient>9876</Recipient>
  </MessageHeader>
  <RollingStockDataset>
    <AdministrativeDataSet>
      <WagonNumberFreight>11111111111</WagonNumberFreight>
      <RegistrationCountry>CY</RegistrationCountry>
      <DatePutIntoService>2016-10-14</DatePutIntoService>
      <AuthorisationValidUntil>2022-10-14</AuthorisationValidUntil>
      <SuspensionOfAuthorisation>>false</SuspensionOfAuthorisation>
      <KeeperShortNameVKM>XXXYYY</KeeperShortNameVKM>
      <ECM>XXXYYY</ECM>
      <ECMCertificate>
        <EINNumber>
          <CountryCodeISO>MT</CountryCodeISO>
          <TypeDocumentEIN>01</TypeDocumentEIN>
          <CounterAccreditedRecognizedBody>01</CounterAccreditedRecognizedBody>
          <EINYear>99</EINYear>
          <EINCounter>01</EINCounter>
        </EINNumber>
        <ECMCertificateValidFrom>2016-10-14</ECMCertificateValidFrom>
        <ECMCertificateValidTo>2022-10-14</ECMCertificateValidTo>
        <CoversTankWagonsForDangerousGoods>>false</CoversTankWagonsForDangerousGoods>

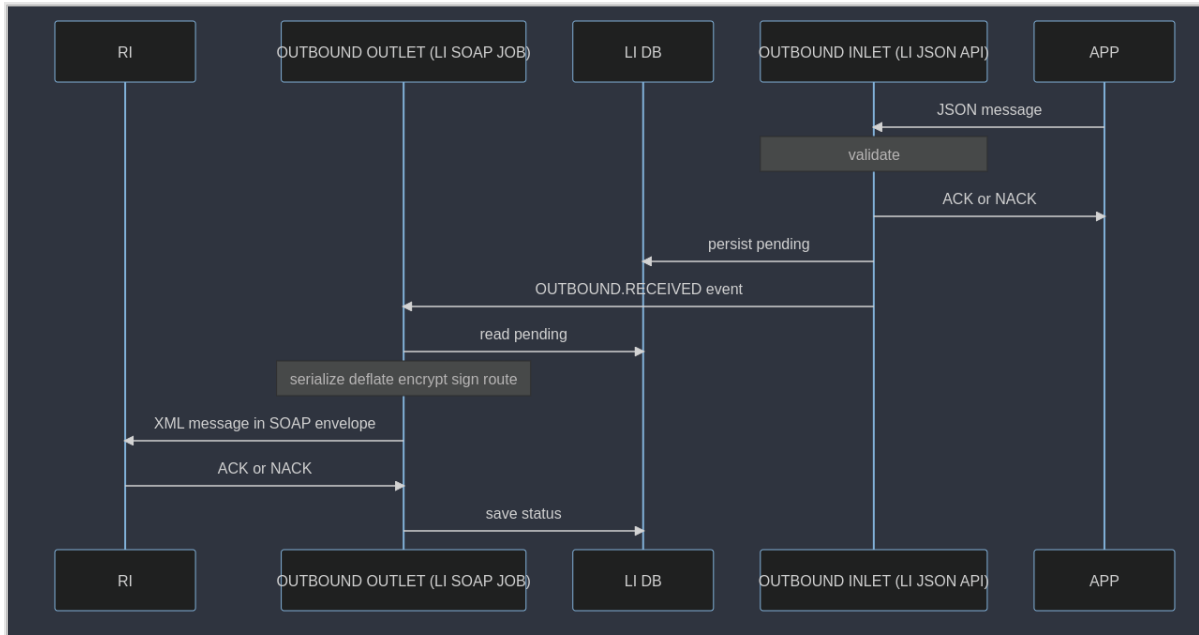
```

```
<CoversNonTankWagonsForDangerousGoods>>false</CoversNonTankWagonsForDangerousGoods>
  <ECMCertificateSuspended>>false</ECMCertificateSuspended>
</ECMCertificate>
  <InteropCapability>01</InteropCapability>
  <GCUWagon>>true</GCUWagon>
</AdministrativeDataSet>
<DesignDataSet>
  <LetterMarking>Xyyyy</LetterMarking>
  <WagonNumberOfAxles>4</WagonNumberOfAxles>
  <InnerWheelbase>2500</InnerWheelbase>
  <MinCurveRadius>35</MinCurveRadius>
  <WagonWeightEmpty>99999</WagonWeightEmpty>
  <LengthOverBuffers>31000</LengthOverBuffers>
  <MaxAxleWeight>1111</MaxAxleWeight>
  <MaxDesignSpeed>120</MaxDesignSpeed>
  <AirBrake>
    <NumberOfBrakes>2</NumberOfBrakes>
    <AirBrakeType>3</AirBrakeType>
    <BrakingPowerVariationDevice>1</BrakingPowerVariationDevice>
    <AirBrakedMass>20</AirBrakedMass>
    <BrakeSpecialCharacteristics>1</BrakeSpecialCharacteristics>
  </AirBrake>
  <HandBrake>
    <HandBrakeType>0</HandBrakeType>
    <ParkingBrakeForce>20000</ParkingBrakeForce>
  </HandBrake>
  <LoadingCapacity>55500</LoadingCapacity>
  <MaxGrossWeight>1111</MaxGrossWeight>
  <DateLastOverhaul>2016-10-14</DateLastOverhaul>
  <OverhaulValidityPeriod>6</OverhaulValidityPeriod>
  <PermittedTolerance>4</PermittedTolerance>
</DesignDataSet>
</RollingStockDataset>
</RollingStockDatasetMessage>
```

Common Interface



Common Interface - inbound messages



Common Interface - outbound messages



updated_at timestamp with time zone	id [PK] uuid	request_xml text	response_json jsonb	response_xml text	arc_id uuid	status character varying (255)	errors jsonb	message_raw text	message_xml text	message_name character varying (255)	message_json jsonb
1024-01-11 16:44:39.009+00	7ddf90f-44f...	<soap:Envelope x...	{\"return\": {\"\$xml\": \"<?xml version=...	<?xml version=...	e7df1394-9c44-42f5-9fa9-8...	OUTLET.SUCCESS	[null]	<TrainRunningInfor...	<TrainRunningInfor...	TrainRunningInformationMes...	{\"TrainRunningInfor...
1024-01-11 16:44:10.866+00	8f2229f2-c23...	<soap:Envelope x...	{\"return\": {\"\$xml\": \"<?xml version=...	<?xml version=...	e7df1394-9c44-42f5-9fa9-8...	OUTLET.SUCCESS	[null]	<TrainRunningInfor...	<TrainRunningInfor...	TrainRunningInformationMes...	{\"TrainRunningInfor...
1024-01-11 16:43:01.976+00	9cca50e0-08...	<soap:Envelope x...	{\"return\": {\"\$xml\": \"<?xml version=...	<?xml version=...	e7df1394-9c44-42f5-9fa9-8...	OUTLET.SUCCESS	[null]	<TrainRunningInfor...	<TrainRunningInfor...	TrainRunningInformationMes...	{\"TrainRunningInfor...
1024-01-11 16:40:34.622+00	b1b157cc-ef...	<soap:Envelope x...	{\"return\": {\"\$xml\": \"<?xml version=...	<?xml version=...	e7df1394-9c44-42f5-9fa9-8...	OUTLET.SUCCESS	[null]	<TrainRunningInfor...	<TrainRunningInfor...	TrainRunningInformationMes...	{\"TrainRunningInfor...
1024-01-11 16:39:50.576+00	bd55cb48-8d...	<soap:Envelope x...	{\"return\": {\"\$xml\": \"<?xml version=...	<?xml version=...	e7df1394-9c44-42f5-9fa9-8...	OUTLET.SUCCESS	[null]	<TrainRunningInfor...	<TrainRunningInfor...	TrainRunningInformationMes...	{\"TrainRunningInfor...
1024-01-11 16:37:37.157+00	bfc6626a-c1...	<soap:Envelope x...	{\"return\": {\"\$xml\": \"<?xml version=...	<?xml version=...	e7df1394-9c44-42f5-9fa9-8...	OUTLET.SUCCESS	[null]	<TrainRunningInfor...	<TrainRunningInfor...	TrainRunningInformationMes...	{\"TrainRunningInfor...
1024-01-11 16:37:02.653+00	da454862-66...	<soap:Envelope x...	{\"return\": {\"\$xml\": \"<?xml version=...	<?xml version=...	e7df1394-9c44-42f5-9fa9-8...	OUTLET.SUCCESS	[null]	<TrainRunningInfor...	<TrainRunningInfor...	TrainRunningInformationMes...	{\"TrainRunningInfor...

Common Interface – sample message trace

Reference files

```

<MessageHeader>
  <MessageReference>
    <MessageType>2006</MessageType>
    <MessageTypeVersion>3.0.2.0</MessageTypeVersion>
    <MessageIdentifier>f03a039a-9741-4db8-bbd3-71c07f908592</MessageIdentifier>
    <MessageDateTime>2023-12-18T10:30:45.222Z</MessageDateTime>
  </MessageReference>
  <SenderReference>f03a039a-9741-4db8-bbd3-71c07f908592</SenderReference>
  <Sender>3617</Sender>
  <Recipient>3617</Recipient>
</MessageHeader>
    
```

```

  <PlannedJourneyLocation>
    <CountryCodeISO>83</CountryCodeISO>
    <LocationPrimaryCode>03015</LocationPrimaryCode>
    <TimingAtLocation>
      <Timing>
        <Time>03:30:00+00:00</Time>
        <Offset>0</Offset>
        <BookedLocationDateTime>2023-12-20T03:30:00+00:00</BookedLocationDateTime>
      </Timing>
    </TimingAtLocation>
    <ResponsibleRU>3617</ResponsibleRU>
    <OperationalTrainNumber>12345</OperationalTrainNumber>
  </PlannedJourneyLocation>
    
```

WIMO

Positions

id	car_id	car_list	index	status	created_at	updated_at	car_property
	3406	6	316		2021-10-19T	2021-10-19T	1031
	3407	7	316	1	2021-10-19T	2021-10-19T	1032
	3408	8	316	2	2021-10-19T	2021-10-19T	1033
	3409	9	316	3	2021-10-19T	2021-10-19T	1034
	3410	10	316	4	2021-10-19T	2021-10-19T	1035
	3386	5	312		2021-10-12T	2021-10-12T	1020
	3387	4	312	1	2021-10-12T	2021-10-12T	1019
	3388	3	312	2	2021-10-12T	2021-10-12T	1018
	3389	2	312	3	2021-10-12T	2021-10-12T	1017
	3390	1	312	4	2021-10-12T	2021-10-12T	1016
	3391	6	313		2021-10-12T	2021-10-12T	1021
	3392	7	313	1	2021-10-12T	2021-10-12T	1022
	3393	8	313	2	2021-10-12T	2021-10-12T	1023
	3394	9	313	3	2021-10-12T	2021-10-12T	1024
	3395	10	313	4	2021-10-12T	2021-10-12T	1025
	3411	11	316	5	2021-10-19T	2021-10-19T	1036
	3412	12	316	6	2021-10-19T	2021-10-19T	1037
	3413	13	316	7	2021-10-19T	2021-10-19T	1038
	3414	14	316	8	2021-10-19T	2021-10-19T	1039
	3381	1	311	4	2021-10-12T	2021-10-12T	1016

Operations

id	car_list_id	status	created_at	updated_at	title	description	done_at	code	company_id	execution_time	execution_time	manipulation_c	operations_pla	typology	train	done_on	planned_arrive	planned_depar	factual_arrives
54662			2023-05-15T15:2023-12-13T22:55260		RUBIERA			21	14					3136		55260 2023-12-13T00	21:38:00		
53524	15361		1 2023-05-15T15:2023-09-20T12:54114		PADOVA INTERPORTO			11	15					3122	1	54114 2023-09-20T00:00:00:0002	00:40:00		
53931			2023-05-15T15:2023-09-18T15:54162		MILANO SMISTAMENTO			11	14					3126	1	54162 2023-09-18T00:00:00:0002	21:05:00		
55279			2023-09-16T07:2023-09-16T07:47232		Tansio Boscoverde			21	14						1	47232 2023-09-16T00:00:00:0002	12:00:00		
54151	15377		1 2023-05-15T15:2023-09-19T17:54180		MILANO SMISTAMENTO			15	14					3129	1	54180 2023-09-19T00:00:00:0002	19:01:00		
54295	15378		1 2023-05-15T15:2023-09-19T12:54266		REGGIO EMILIA			16	15					3131	1	54266 2023-09-19T00:00:00:0002	03:00:00		
55391			2023-12-18T07:2023-12-18T07:53233		PADOVA INTERPORTO			1	14					3289		53233 2024-01-16T00	23:35:00		
55390			2023-12-18T07:2023-12-18T07:53233		PADOVA INTERPORTO			1	14					3289		53233 2024-01-09T00	23:35:00		
55389			2023-12-18T07:2023-12-18T07:53233		PADOVA INTERPORTO			1	14					3289		53233 2024-01-02T00	23:35:00		
54619			2023-05-15T15:2023-09-19T08:55256		RUBIERA			19	14					3135		55256 2023-09-19T00	07:08:00		
55388			2023-12-18T07:2023-12-18T07:53233		PADOVA INTERPORTO			1	14					3289		53233 2023-12-26T00	23:35:00		
55387			2023-12-18T07:2023-12-18T07:53233		PADOVA INTERPORTO			1	14					3289		53233 2023-12-19T00	23:35:00		
51385	15341		1 2023-05-15T15:2023-09-18T06:47232		TARVISIO BOSCOVERDE			1	14					3095	1	47232 2023-09-16T00:00:00:0002	05:08:00		
51665			1 2023-05-15T15:2023-09-18T14:51049		VITTUONE ARLUNO			2	12					3100		51049 2023-09-18T00	13:07:00		15:18:00
51793			1 2023-05-15T15:2023-09-19T06:51107		MILANO SMISTAMENTO			2	14					3101		51107 2023-09-19T00	05:57:00		
52490			2023-05-15T15:2023-09-18T11:53100		PADOVA INTERPORTO			5	15					3111		53100 2023-09-18T00	10:43:00		12:40:00
52660			1 2023-05-15T15:2023-09-19T08:53232		PADOVA INTERPORTO			8	14					3114		53232 2023-09-19T00	23:45:00		
52807	15331		1 2023-05-15T15:2023-09-16T06:54002		PADOVA INTERPORTO			7	12					3116	1	54002 2023-09-15T00:00:00:0002	13:32:00		
54974			1 2023-05-15T15:2023-09-16T07:52284		REGGIO EMILIA			20	15					3139		52284 2023-09-15T00	10:15:00		10:16:00
55278	15326		1 2023-09-15T09:2023-09-15T09:99999		Alessandria			21	15						1	99999 2023-09-15T00:00:00:0002	11:00:00		
52300			2023-05-15T15:2023-09-19T18:53008		PADOVA INTERPORTO			6	12					3110		53008 2023-09-19T00	19:27:00		
52934	15362		1 2023-05-15T15:2023-09-19T02:54004		VITTUONE ARLUNO			10	12					3117	1	54004 2023-09-19T00:00:00:0002	03:35:00		
53881	15354		1 2023-05-15T15:2023-09-18T12:54128		PADOVA INTERPORTO			10	14					3124	1	54128 2023-09-18T00:00:00:0002	07:48:00		
51534			2023-05-15T15:2023-09-20T11:49667		DOMO II			1	14					3098		49667 2023-09-20T00	09:05:00		12:27:00
54651			1 2023-05-15T15:2023-09-21T04:55260		RUBIERA			21	14					3136		55260 2023-09-20T00	21:38:00		
51666			2023-05-15T15:2023-09-20T14:51049		VITTUONE ARLUNO			2	12					3100		51049 2023-09-20T00	13:07:00		14:50:00
51795			1 2023-05-15T15:2023-09-21T07:51107		MILANO SMISTAMENTO			4	14					3101		51107 2023-09-21T00	05:57:00		08:00:00
51901			2023-05-15T15:2023-09-19T19:51123		MILANO SMISTAMENTO			3	14					3103		51123 2023-09-19T00	16:09:00		
52302			2023-05-15T15:2023-09-21T20:53008		PADOVA INTERPORTO			7	12					3110		53008 2023-09-21T00	19:27:00		
52916	15435		1 2023-05-15T15:2023-09-21T12:54002		PADOVA INTERPORTO			10	12					3116	1	54002 2023-09-21T00:00:00:0002	13:32:00		
52909	15398		1 2023-05-15T15:2023-09-20T15:54002		PADOVA INTERPORTO			7	12					3116	1	54002 2023-09-20T00:00:00:0002	13:32:00		
52935			2023-05-15T15:2023-09-20T22:54004		VITTUONE ARLUNO			11	12					3117	1	54004 2023-09-21T00:00:00:0002	03:35:00		
53088	15389		1 2023-05-15T15:2023-09-20T05:54100		RUBIERA			9	14					3119	1	54100 2023-09-20T00:00:00:0002	05:18:00		

Movements

id	operation_id	source_car_l	destination_c	created_at	updated_at	source_car_l	destination_c	typology	relative_mov	destination_r	operation_ad	discarded_at	performed_at	notes
517	10535		311	2021-10-12T	2021-10-12T10:13:12.121Z				7				2021-10-13T10:09:00.000Z	
518	10535	311		2021-10-12T	2021-10-12T10:17:33.045Z				10		26230		2021-10-12T10:17:33.044Z	
1123	25557			2022-03-02T	2022-03-02T11:06:22.928Z				6					
520	10535	311	312	2021-10-12T	2021-10-12T10:24:00.647Z									
519	10535	311		2021-10-12T	2021-10-12T10:23:53.443Z				11				2021-10-12T10:23:53.442Z	
1122	25557	580	580	2022-03-02T	2022-03-02T	5	5		3	542e49229d62e2d2ae13801a4657b596				
522	10535			2021-10-12T	2021-10-12T10:38:00.301Z				6					
523	10461		313	2021-10-12T	2021-10-12T10:43:55.681Z			1	7				2021-10-12T10:43:00.000Z	
1931	28291	1024	1025	2022-03-30T	2022-03-30T13:05:25.661Z				2					
1144	22677			2022-03-02T	2022-03-02T11:40:40.532Z				6					
1145	22677	315	586	2022-03-02T	2022-03-02T11:40:40.796Z			4	4	542e49229d62e2d2ae13801a4657b596				
1181	26782	594		2022-03-03T	2022-03-03T08:25:01.775Z				10		99632		2022-03-03T08:25:01.775Z	
1185	26122	597	598	2022-03-03T	2022-03-03T	2					97113			
532	10784			2021-10-12T	2021-10-12T11:10:04.037Z				6					
533	10784			2021-10-12T	2021-10-12T11:10:35.402Z				5					Test
535	10784			2021-10-12T	2021-10-12T11:11:48.490Z				6					
534	10784	312	312	2021-10-12T	2021-10-12T11:11:48.618Z				3	ca82b7facd0934a3a6bc3a52774e02b1				
536	10546	313	313	2021-10-12T	2021-10-12T	1	1		3	ce3df58f64001f40c38f4ebd561e434d				
537	10546			2021-10-12T	2021-10-12T11:24:04.653Z				6			2021-10-12T11:24:04.652Z		
538	10546			2021-10-12T	2021-10-12T11:24:04.674Z				5					test
539	11038		315	2021-10-12T	2021-10-12T16:22:55.948Z				7				2021-10-12T16:22:00.000Z	
540	11125		316	2021-10-19T	2021-10-19T19:33:06.866Z				7				2021-10-18T23:10:00.000Z	
541	11125	316		2021-10-19T	2021-10-19T19:34:04.970Z				8				2021-10-19T19:34:04.969Z	
542	11125	316		2021-10-19T	2021-10-19T19:34:44.232Z				9				2021-10-19T19:34:44.232Z	
1196	25790		606	2022-03-04T	2022-03-04T15:16:12.916Z			2	7				2022-03-04T15:15:00.000Z	
609	11283	317		2021-10-27T	2021-10-27T14:00:56.183Z				11		30256		2021-10-27T14:00:56.182Z	
610	11283	317	327	2021-10-27T	2021-10-27T14:01:09.127Z						30256			
611	11283	327	328	2021-10-27T	2021-10-27T14:03:26.675Z						30255			